



Model Safe School Plan

*A Template for Ensuring a Safe, Healthy and
Productive Learning Environment*

Volume 2 – Emergency Procedures

**Birmingham Community Charter High School
Comprehensive School Safety Plan
Office of Environmental Health and Safety
Revised October 15, 2022**

MODEL SAFE SCHOOL PLAN, VOLUME 2 – EMERGENCY PROCEDURES

PREFACE

California public schools are required to comply with California Education Code (CEC), Section 35294, dealing with the preparation of “safe school plans.” These plans address violence prevention, emergency preparedness, traffic safety and crisis intervention. The District previously issued *Bulletin No. 53 - Updating the Integrated Safe School Plan* and *Bulletin No. 58 - Essential Safety Standards Checklist* as guidance in the preparation of safe school plans.

The Office of Environmental Health and Safety (OEHS) has developed the *Model Safe School Plan* for use as a template in the preparation of safe school plans for each of the District’s 900 schools. The plan is comprised of two volumes: *Model Safe School Plan, Volume 1 – Prevention Programs* and *Model Safe School Plan, Volume 2 – Emergency Procedures*. Volume 1 deals with violence prevention, traffic safety and crisis intervention. Volume 2 covers emergency preparedness and response, and is based on the California Standardized Emergency Management System (SEMS), which is designed to centralize, organize and coordinate emergency response among various District organizations and public agencies. SEMS provides an effective framework for managing emergencies ranging from minor incidents to major earthquakes.

The OEHS *Model Safe School Plan* is based on guidance from the California Department of Education and the Office of Attorney General (*Safe Schools – A Planning Guide for Action, 2002 Edition*). Use of the OEHS *Model Safe School Plan* will help to ensure safe school plans are prepared in compliance with CEC, Section 35294.

The *Model Safe School Plan* was prepared in consultation with School Police, Office of Emergency Services, Student Health & Human Services, public members of the District School Safety Committee, California Department of Health Services, City of Los Angeles Fire Department, and other members of the school community.



Safe School Plan

Volume 2 – Emergency Procedures

**Birmingham Community Charter High School
17000 Haynes St.
Lake Balboa, CA. 91406
818-758-5246
October 15, 2022**



Homeland Security Advisory Recommendations Adapted for LAUSD Schools

(Based on American Red Cross Homeland Security Advisory)

SEVERE (Red)	<ul style="list-style-type: none"> • <i>Complete all recommended actions at lower levels.</i> • Listen to radio, TV, and KLCS for current information and instructions. • Be alert and immediately report suspicious activity to School Police at (213) 625-6631 and LAPD Homeland Security Bureau (1-877-A-THREAT). • Close school if recommended to do so by appropriate authorities. • 100% identification check (i.e. driver's license retained at front office) and escort anyone entering school other than students, staff and faculty. • Offer lessons from Masters of Disaster "<i>Facing Fear: Helping Young People Deal with Terrorism and Tragic Events</i>" curriculum. • Ensure School Site Crisis Team members are available for students, staff and faculty.
HIGH (Orange)	<ul style="list-style-type: none"> • <i>Complete all recommended actions at lower levels.</i> • Be alert and report suspicious activity to School Police at (213) 625-6631 and LAPD Homeland Security Bureau (1-877-A-THREAT). • Review emergency procedures and supplies. • Offer Masters of Disaster "<i>Facing Fear: Helping Young People Deal with Terrorism and Tragic Events</i>" lessons in grades K-12. • Discuss children's fears concerning possible terrorist attacks in consultation with School Site Crisis Team. • Prepare to handle inquiries from anxious parents and media.
ELEVATED (Yellow)	<ul style="list-style-type: none"> • <i>Complete all recommended actions at lower levels.</i> • Be alert and report suspicious activity to School Police at (213) 625-6631 and LAPD Homeland Security Bureau (1-877-A-THREAT). • Ensure all emergency supplies are stocked and ready. • Distribute copies of <i>Terrorism: Preparing for the Unexpected</i> to students, staff and parents.
GUARDED (Blue)	<ul style="list-style-type: none"> • <i>Complete all recommended actions at lower level.</i> • Be alert and report suspicious activity to School Police at (213) 625-6631 and LAPD Homeland Security Bureau (1-877-A-THREAT). • Provide safety training to staff and practice emergency drills pursuant to school emergency procedures. • Review communications plan and update emergency contact information. • Review emergency supplies and supplement as necessary. • Offer lessons from "Masters of Disaster" curriculum for grades K-8 on emergency preparedness for natural disasters.
LOW (Green)	<ul style="list-style-type: none"> • Develop school emergency plans per District Bulletins <i>Q-48 (Emergency Drills and Procedures)</i>, <i>Q-50 (School Site Emergency Disaster Supplies)</i>, <i>N-53 (Evaluating and Updating the Integrated Safe School Plan)</i>, <i>N-58 (Essential Safety Standards Checklist)</i>, and <i>OEHS Model Safe School Plan, Volume 2 - Emergency Procedures</i>. • Offer American Red Cross "Masters of Disaster" curriculum for grades K-8 on emergency preparedness for natural disasters. • Ensure selected staff members are trained on first aid, CPR and AED.

References: American National Red Cross – www.redcross.org; American Red Cross, Los Angeles Chapter – www.acrossla.org; Office of Environmental Health and Safety – www.lausd-oehs.org; Further inquiries may be directed to OEHS at (213) 241-3199

March 31, 2003

TABLE OF CONTENTS

1.0	INTRODUCTION	1-1
1.1	OVERVIEW	1-1
1.2	PLAN ORGANIZATION.....	1-1
2.0	STANDARDIZED EMERGENCY MANAGEMENT.....	2-1
2.1	EMERGENCY PLANNING WITH SEMS.....	2-1
2.2	INCIDENT COMMAND TEAM.....	2-4
2.3	FIRST AID/MEDICAL TEAM	2-7
2.4	PSYCHOLOGICAL FIRST AID TEAM	2-9
2.5	SEARCH AND RESCUE TEAM	2-11
2.6	SECURITY/UTILITIES TEAM.....	2-14
2.7	SUPPLY/EQUIPMENT TEAM	2-16
2.8	ASSEMBLY AREA TEAM.....	2-18
2.9	REQUEST GATE TEAM	2-20
2.10	REUNION GATE TEAM	2-22
2.11	FIRE SUPPRESSION AND HAZMAT TEAM.....	2-24
2.12	DOCUMENTATION POSITION (OPTIONAL).....	2-26
2.13	COMMUNICATIONS POSITION (OPTIONAL)	2-27
2.14	SCHOOL STAFF.....	2-28
2.15	OFFICE OF ENVIRONMENTAL HEALTH AND SAFETY (OEHS).....	2-28
2.16	PREPAREDNESS PROCEDURES	2-29
3.0	INITIAL RESPONSE TO EMERGENCIES	3-1
3.1	IDENTIFY TYPE OF EMERGENCY.....	3-1
3.2	IDENTIFY LEVEL OF EMERGENCY.....	3-1
3.3	DETERMINE IMMEDIATE RESPONSE ACTIONS.....	3-2
4.0	IMMEDIATE RESPONSE ACTIONS	4-1
4.1	DUCK AND COVER.....	4-1
4.2	SHELTER-IN-PLACE.....	4-1
4.3	LOCK DOWN.....	4-3
4.4	EVACUATE BUILDING.....	4-4
4.5	OFF-SITE EVACUATION.....	4-4
4.6	ALL CLEAR.....	4-5
5.0	EMERGENCY PROCEDURES	5-1
5.1	AIRCRAFT CRASH.....	5-2
5.2	ANIMAL DISTURBANCE	5-3
5.3	ARMED ASSAULT ON CAMPUS	5-4
5.4	BIOLOGICAL OR CHEMICAL RELEASE	5-5
5.5	BOMB THREAT.....	5-9
5.6	BUS DISASTER	5-11
5.7	DISORDERLY CONDUCT.....	5-15
5.8	EARTHQUAKE.....	5-16
5.9	EXPLOSION/RISK OF EXPLOSION	5-18
5.10	FIRE IN SURROUNDING AREA.....	5-23
5.11	FIRE ON SCHOOL GROUNDS.....	5-24

5.12	FLOODING	5-25
5.13	LOSS OR FAILURE OF UTILITIES.....	5-26
5.14	MOTOR VEHICLE CRASH	5-31
5.15	PSYCHOLOGICAL TRAUMA.....	5-32
5.16	SUSPECTED CONTAMINATION OF FOOD OR WATER	5-33
5.17	THREAT OF VIOLENCE.....	5-34
5.18	UNLAWFUL DEMONSTRATION/WALKOUT.....	5-36
6.0	OTHER EMERGENCY INFORMATION.....	6-1
6.1	DISTRICT BULLETINS DEALING WITH EMERGENCIES	6-2
6.2	ALERT SYSTEM 1 (PARENT).....	6-2
6.3	ALERT SYSTEM 2 (SCHOOL PERSONNEL)	6-2
6.4	SITE PLOT PLAN AND VICINITY MAP	6-3
6.5	EMERGENCY PHONE NUMBERS	6-3
6.6	EMERGENCY SUPPLIES AND EQUIPMENT.....	6-5
6.7	EMERGENCY DRILLS	6-10

FIGURES

FIGURE	PAGE
2-1 EMERGENCY MANAGEMENT ORGANIZATION CHART.....	2-3

TABLES

TABLE	PAGE
6-1 DISTRICT BULLETINS.....	6-2
6-2 EMERGENCY PHONE NUMBERS.....	6-4
6-3 RECOMMENDED CLASSROOM EMERGENCY SUPPLIES	6-6
6-4 RECOMMENDED SCHOOL EMERGENCY SUPPLIES.....	6-7

APPENDICES

APPENDIX A FORMS

EMERGENCY HAZARD ASSESSMENT SUMMARY (FORM A)
BIOLOGICAL AND CHEMICAL RELEASE RESPONSE CHECKLIST (FORM B)
BOMB THREAT REPORT (FORM C)
INJURY AND MISSING PERSONS REPORT (FORM D)
STUDENT RELEASE LOG (FORM E)
DAMAGE ASSESSMENT REPORT (FORM F)
EMERGENCY DRILL RECORD (FORM G)
EMERGENCY MANAGEMENT ORGANIZATIONAL CHART (FORM H)

APPENDIX B ALERT SYSTEMS

ALERT SYSTEM 2: SCHOOL PERSONNEL

APPENDIX C MAPS

SITE PLOT PLAN
VICINITY MAP
THOMAS BROS. MAP

1.0 INTRODUCTION

1.1 OVERVIEW

State law requires that schools be adequately prepared to respond to earthquakes, fires, and other emergencies (California Education Code § 35295 through § 35297, California Government Code § 8607, and California Code of Regulations § 2400 through § 2450). To assist schools in complying with these requirements, the Office of Environmental Health and Safety (OEHS) has developed the *Model Safe School Plan, Volume 2 – Emergency Procedures (06-05-03)* for use as a template in the preparation of emergency procedures for each of the LAUSD schools. The emergency management teams and procedures outlined in this plan are consistent with the Standardized Emergency Management System (SEMS) developed by the State of California. This plan presents specific procedures to be used in preparing for, and responding to, school emergencies.

1.2 PLAN ORGANIZATION

The effective management of emergencies requires both adequate *emergency preparedness* and *emergency response* capabilities. This plan is organized into six sections. Section 2 deals with emergency preparedness, identifies the school's emergency response teams and defines the roles and responsibilities of team members. Sections 3.0 and 4.0 present guidance for determining the nature and extent of an emergency, and a series of initial response actions to be taken in an emergency. Section 5.0 provides detailed emergency response procedures for 18 types of emergencies that may be encountered in a school setting. Section 6.0 provides supplemental emergency information including contact information, supply lists and evacuation routes. Standard forms, site maps and other supporting information are contained in the Appendices.

The Principal will ensure that this *Safe School Plan, Volume 2 - Emergency Procedures* is consistent with District Bulletin No. 58, (Essential Safety Standards Checklist), and SEMS, and that the plan addresses the following eighteen emergencies: aircraft crash; aircraft landing, animal disturbance; armed assault on campus; biological or chemical release; bomb threat; bus disaster; disorderly conduct; earthquake; explosion/risk of explosion; fire in surrounding area; fire on school grounds; flooding; loss or failure of utilities; motor vehicle crash; psychological trauma, suspected contamination of food or water; threat of violence; and unlawful demonstration/walkout.

2.0 STANDARDIZED EMERGENCY MANAGEMENT

2.1 EMERGENCY PLANNING WITH SEMS

The California Standardized Emergency Management System (SEMS) is designed to centralize and coordinate emergency response through the use of standardized terminology and processes. This greatly facilitates the flow of information and resources among the multiple agencies often participating in response to an emergency. SEMS consists of the following five functions: Management; Planning/Intelligence; Operations; Logistics; and Finance/Administration.

2.1.1 Management

During an emergency, the Incident Commander is responsible for directing response actions from a designated Command Post. To effectively direct response actions, the Incident Commander must constantly assess the situation and develop and implement appropriate strategies. The Incident Commander must be familiar with the available resources, accurately document all response actions, and effectively communicate response strategies to others participating in the response. This function is typically directed by the Principal, as the Incident Commander. The Principal is assisted in carrying out this function by a Public Information Officer, Safety Coordinator, and Agency Liaison.

2.1.2 Planning/Intelligence

During an emergency, SEMS Planning and Intelligence involves the use of various methods to efficiently gather information, weigh and document the information for significance, and actively assess the status of the emergency. This understanding and knowledge about the situation at hand is vital to the effective management of a response. Under SEMS, this function is supported by two staff members, one involved with “Documentation” and the other with “Situation Analysis.” “Situation Analysis” may be performed by a “Communications” position. Both of these positions, if assigned at the discretion of the Principal, will report directly to the Incident Commander (Principal) unless a Planning/Intelligence Chief is assigned.

2.1.3 Operations

Under SEMS, all emergency response actions are implemented under the Operations function. This function is supported by staff performing first aid, crisis intervention, search and rescue, site security, damage assessment, evacuations, and the release of students to parents. These activities are performed by the following teams, under the direct supervision of the Incident Commander (Principal), unless an Operations Chief is assigned: First Aid/Medical Team; Security/Utilities Team; Assembly Area Team; Psychological First Aid Team; Supply/Equipment Team; Request Gate Team; Reunion Gate Team; Fire Suppression/HazMat Team; and Search and Rescue Teams.

2.1.4 Logistics

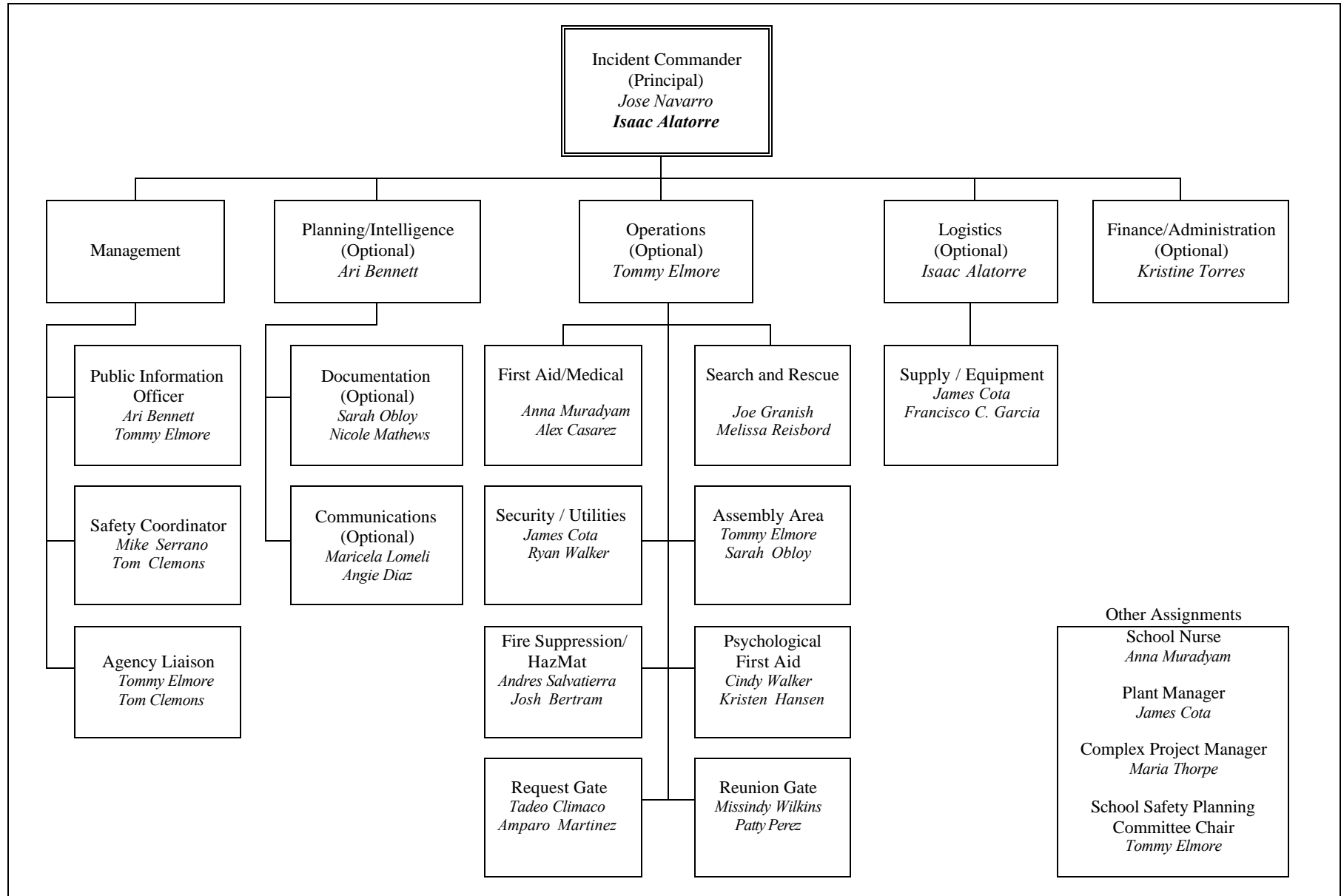
The Logistics function of SEMS supports emergency operations by coordinating personnel; assembling and deploying volunteer teams; providing supplies, equipment, and services; and facilitating communications among emergency responders. These activities are performed by the Security/Utilities Team and the Supply/Equipment Team both of which report directly to the Incident Commander unless a Logistics Chief is assigned.

2.1.5 Finance/Administration

The Finance/Administration function of SEMS involves the purchasing of all necessary materials, tracking financial records, timekeeping for emergency responders, and recovering school records following an emergency. These activities may be performed by a “Documentation” position which reports directly to the Incident Commander unless a Finance/Administration Chief is assigned.

Figure 2.1 presents an Emergency Management Organization Chart modeled after SEMS.

FIGURE 2-1: EMERGENCY MANAGEMENT ORGANIZATION CHART



[Note: This Organization Chart is based on SEMS, and adapted for BCCHS use. The Principal and School Safety Planning Committee should use discretion in making further modifications to address specific needs of the school. The first name in the box represents the primary responsible person whereas the second name denotes the backup]

2.2 INCIDENT COMMAND TEAM

The Incident Command Team is responsible for directing school emergency response activities.

2.2.1 Assignments

The Incident Command Team is led by the Principal (Incident Commander) and also includes the school's Public Information Officer, the Safety Coordinator and the Agency Liaison.

Incident Commander: *Jose Navarro*

Public Information Officer: *Ari Bennett*

Safety Coordinator: *Mike Serrano*

Agency Liaison: *Tom Clemons*

The Incident Commander also directs the activities of all other teams.

2.2.2 Roles and Responsibilities

2.2.2.1 Incident Commander

The Incident Commander (Principal) is responsible for directing emergency operations and shall remain at the Command Post to observe and direct all operations. Specific duties of the Incident Commander may include:

- Periodically assessing the situation.
- Directing the Incident Command Team and all other emergency teams.
- Determining the need for, and requesting, outside assistance.
- Periodically communicating with the Local District Superintendent.

2.2.2.2 Public Information Officer

The Public Information Officer (PIO) is the official spokesperson for the school site in an emergency and is responsible for communicating with the

media and delivering public announcements. Specific duties of the Public Information Officer may include:

- Periodically receiving updates and official statements from the Incident Commander.
- Maintaining a log of PIO actions and all communications.
- Periodically interacting with the media and District Communications.
- Preparing statements for dissemination to the public.
- Ensuring announcements and other public information are translated into other languages as needed.
- Monitoring news broadcasts about the incident and correcting any misinformation.

2.2.2.3 Safety Coordinator

The Safety Coordinator is responsible for ensuring that all emergency activities are conducted in as safe a manner as possible under the circumstances that exist. Specific duties of the Safety Coordinator may include:

- Periodically checking with the Incident Commander for situation briefings and updates.
- Maintaining all records and documentation as assigned by the Incident Commander.
- Monitoring drills, exercises, and emergency response activities for safety.
- Identifying safety hazards.
- Ensuring that responders use appropriate safety equipment.

2.2.2.4 Agency Liaison

The Agency Liaison is responsible for coordinating the efforts of outside agencies such as police and fire by ensuring the proper flow of information between Incident Command and the agencies. Specific duties of the Agency Liaison may include:

- Periodically checking with the Incident Commander for situation briefings and updates.
- Maintaining all records and documentation as assigned by the Incident Commander.
- Briefing agency representatives on current situation, priorities and planned actions.

- Ensuring coordination of efforts by periodically keeping Incident Commander informed of agencies' action plans and providing periodic updates to agency representatives as necessary.

2.2.3 Team Supplies and Equipment

- Copy of the school's Emergency Procedures
- Campus map
- Master keys
- Copies of staff and students rosters
- Hand-held radios
- Bullhorn
- Battery-operated AM/FM radio.
- First Aid kit
- Clipboard, Paper, Pens
- Hard Hat
- Vest or position identifier
- Large campus map

2.2.4 Team Assembly Location

Inside: *Principals Conference Room*

Outside: *Basketball Blacktop*

Team Members will initially meet at the inside location. If the inside location is unavailable, Team Members will meet at the outside location.

2.3 FIRST AID/MEDICAL TEAM

The First Aid/Medical Team is responsible for ensuring that first aid supplies are available and properly administered during an emergency.

2.3.1 Assignments

First Aid/Medical Team Leader: *Anna Muradyam*

Alternate Team Leader: *Alex Casarez*

First Aid/Medical Team Member: *Tatiana Mathis*

First Aid/Medical Team Member: *Jim Rose*

First Aid/Medical Team Member: *Vincent Kezman*

School Nurse: *Anna Muradyam*

2.3.2 Roles and Responsibilities

First Aid/Medical Team Leader

The First Aid/Medical Team Leader is responsible for directing team activities by periodically interacting with the incident Commander to determine medical needs and planned actions. The First Aid/Medical Team Leader is also responsible for collecting the Injury and Missing Persons Report (Form D, Appendix A) from Team Members and making these reports to have them readily available to the Incident Commander. Specific duties of the First Aid/Medical Team Leader may include:

- Assigning First Aid personnel and assessing available inventory of supplies & equipment.
- Designating and setting up First Aid/Medical treatment areas, with access to emergency vehicles.
- Determining the need for skilled medical assistance, and overseeing care, treatment, and assessment of patients.
- Periodically keeping the Incident Commander informed of overall status.
- Completing the Injury and Missing Persons Report (Form D, Appendix A).

First Aid/Medical Team Members

The members of the First Aid/Medical Team are responsible for assessing injuries and administering necessary first aid and medical treatment as indicated during an emergency. Specific duties of the members of the First Aid/Medical Team may include:

- Setting up first aid area, triage and/or temporary morgue.
- Keeping accurate records of care given and tagging each of the injured with name, address, injury and any treatment rendered.
- Reporting deaths immediately to First Aid/Medical Team Leader.

2.3.3 Supplies and Equipment

- Vest or position identifier
- First aid supplies
- Triage tags
- Hand-held radios
- Stretchers
- Blankets
- Wheelchairs
- Patient record forms
- Site map
- Injury and Missing Persons Report (Form D, Appendix A)

2.3.4 Team Assembly Location

Inside: *Health Office*

Outside: *Tennis Courts*

Team Members will initially meet at the inside location. If the inside location is unavailable, Team Members will meet at the outside location.

2.4 PSYCHOLOGICAL FIRST AID TEAM

The Psychological First Aid Team is responsible for the caring and safety of all students on campus during an emergency. It also provides psychological first aid as needed during and immediately after an emergency, pursuant to the District’s Crisis Intervention Handbook.

2.4.1 Assignments

Psychological First Aid Team Leader: *Cindy Walker*

Alternate Team Leader: *Kristen Hansen*

Psychological First Aid Team Member: *Lisa Gazarian*

Psychological First Aid Team Member: *Ana Palacios*

Psychological First Aid Team Member: *Alex Bartholomew*

3.4.2 Roles and Responsibilities

Psychological First Aid Team Leader

The Psychological First Aid Team Leader is responsible for directing team activities and periodically interacting with the Incident Commander to identify problems and report status. The Psychological First Aid Team Leader is also responsible for assigning personnel as needed.

Psychological First Aid Team Members

The members of the Psychological First Aid Team are responsible for monitoring the safety and well-being of the students and staff in the Assembly Area. The Psychological First Aid Team will direct all external requests for information to the Public Information Officer. Specific duties of the members of the Psychological First Aid Team may include:

- Administering minor first aid and psychological first aid as needed
- Supporting the Release Gate Team as needed.

- Coordinating with the Incident Commander to provide water and food to student and staff when necessary.
- Providing reassurance to students.
- Updating records of the number of students and staff.

2.4.3 Supplies and Equipment

- Vest or position identifier
- Hand-held radio
- Ground Cover, tarps
- First aid kit
- Paper, pens, pencils

2.4.4 Team Assembly Location

Inside: *Large Gym*

Outside: *Tennis Courts South Side*

Team Members will initially meet at the inside location. If the inside location is unavailable, Team Members will meet at the outside location.

2.5 SEARCH AND RESCUE TEAM

The Search and Rescue Team is responsible for preparing and performing search and rescue operations during an emergency. There may be two or more Search and Rescue teams.

2.5.1 Assignments

Search and Rescue Team Leader: *Joe Granish*

Alternate Team Leader: *Melissa Reisbord*

SAR Team 1 Members: *Melissa Reisbord, Shawn Bankhead, Bill Epps*

SAR Team 2 Members: *LeAnne Bennett-Riley, Michel Endene, Rodney Jackson*

SAR Team 3 Members: *Joe Granish, Manuel Barrientos, Fernando Vasquez*

SAR Team 4 Members: *Carlo Purther, Lizeth Lopez, Chris Monaster*

2.5.2 Roles and Responsibilities

Search and Rescue Team Leader

The Search and Rescue Team Leader is responsible for directing team activities and keeping the Incident Commander informed of overall status. Specific duties of the Search and Rescue Team Leader may include:

- Obtaining briefings from the Incident Commander, noting injuries and other situations requiring response.
- Assigning and recording teams based on available manpower, minimum 2 persons per team.
- Updating teams' reports on site map and recording exact location of damage and triage tally.

Search and Rescue Team Members

The members of the Search and Rescue Team are responsible for performing search and rescue operations during an emergency. Specific duties of the members of the Search and Rescue Team may include:

- Searching assigned area, reporting gas leaks, fires, or structural damage to Team Leader upon discovery.
- Shutting off gas or extinguishing fires as appropriate.
- Periodically reporting to the Team Leader on location, number, and condition of injured.
- Conducting pre-established search and rescue patterns, checking each classroom, office, storage room, auditorium and other rooms.
- Sealing off and posting areas where hazardous conditions exist.
- Contacting Security/Utilities Team to secure the building from reentry after the search.

2.5.3 Supplies and Equipment

- Vest or position identifier
- Hard hat
- Work and latex gloves
- Whistle with master keys on neck lanyard
- 2-way radio
- Clipboard with job duties
- Map indicating search plan
- CO2 fire extinguishers
- Water-type fire extinguishers
- Hoses
- Water bib keys
- Gloves
- Blankets
- Bolt cutters
- Shovels
- Ropes
- Triage tags
- Bucket or duffel bag
- Goggles
- Flashlight
- Dust masks
- Pry bar
- Grease pencil
- Pencils
- Duct tape
- Caution tape
- Masking tape
- One member wears first aid backpack

2.5.4 Team Assembly Location

Inside: *Large Gym*

Outside: *PE Blacktop*

Team Members will initially meet at the inside location. If the inside location is unavailable, Team Members will meet at the outside location.

2.6 SECURITY/UTILITIES TEAM

The Security/Utilities Team is responsible for the security of the school site and its population during an emergency. The Security/Utilities Team will coordinate activities with the Incident Commander as required. Close coordination with the Reunion Gate Team is necessary in order to safely reunite students with their parents or lawful guardians. The Security/Utilities Team is also responsible for initiating short-term repairs and other necessary actions during an emergency. The effective response of the Security/Utilities Team in shutting down facility air handling systems, and gas, power and water supplies can be vital in minimizing damage to school facilities. This team includes participation by the custodial and cafeteria staff.

2.6.1 Assignments

Security/Utilities Team Leader: *James Cota*

Alternate Team Leader: *Ryan Walker*

Security/Utilities Team Member: *Josh Bertram*

Security/Utilities Team Member: *Francisco C. Garcia*

Security/Utilities Team Member:

2.6.2 Roles and Responsibilities

Security/Utilities Team Leader

The Security/Utilities Team Leader is responsible for directing team activities and interacting with the Incident Command to identify problems and report status. The Security/Utilities Team Leader is also responsible for contacting local utilities (water, electricity, gas, sewer) as needed.

Security/Utilities Team Members

The members of the Security/Utilities Team are responsible for securing the school and reporting that the campus is in “lock-down” to the Incident Commander. They are also responsible for surveying all utilities and taking

appropriate actions to shut-off gas, water and electricity. The Security/Utilities Team will direct all external requests for information to the Public Information Officer. Specific duties of the members of the Security/Utilities Team may include:

- Locking all external gates and doors; unlocking gates when appropriate.
- Stationing one team member at the main entrance to the school to direct emergency vehicles to area(s) of need and to greet parents.
- Keeping students and staff out of buildings, as necessary.
- Assisting at Reunion Gate as appropriate.
- Assessing damage to school facilities.
- Checking emergency water supply and making it ready for distribution.
- Setting up temporary sanitation areas (portable toilets).
- Helping with first aid and setting up temporary morgue (if necessary).
- Preparing and distributing food as directed by the Incident Commander.
- Assisting the First Aid/Medical Team in comforting students as needed.

2.6.3 Supplies and Equipment

- Vest or position identifier
- Master keys
- Hand-held radio
- Copy of the school's Emergency Procedures
- Large durable signs for providing direction and information
- Utility shut-off tools
- Custodial and food supply inventories
- Notebook containing site maps

2.6.4 Team Assembly Location

Inside: *Large Gym*

Outside: *Emergency Supply Bin*

Team Members will initially meet at the inside location. If the inside location is unavailable, Team Members will meet at the outside location. The team will then rove the entire campus to determine areas of need.

2.7 SUPPLY/EQUIPMENT TEAM

The Supply/Equipment Team is responsible for ensuring the availability and delivery of adequate supplies and equipment during the course of an emergency.

2.7.1 Assignments

Supply/Equipment Team Leader: *James Cota*

Alternate Team Leader: *Francisco C. Garcia*

Supply/Equipment Team Member: *BnG Staff*

Supply/Equipment Team Member: *BnG Staff*

Supply/Equipment Team Member: *BnG Staff*

2.7.2 Roles and Responsibilities

Supply/Equipment Team Leader

The Supply/Equipment Team Leader is responsible for directing team activities and keeping the Incident Commander informed of overall status. Specific duties of the Supply/Equipment Team Leader may include:

- Reporting equipment and supply needs.
- Estimating the number of persons requiring shelter and determining the length of time shelter will be needed.

Supply/Equipment Team Members

The members of the Supply/Equipment Team are responsible for assessing the adequacy of available water, food and other supplies and organizing the distribution of resources for immediate use (water, food, power, radios, telephones, and sanitary supplies). Specific duties of the members of the Supply/Equipment Team may include:

- Distributing emergency water and food supplies.

- Establishing a list of all persons in shelter and determining any special needs.
- Controlling conservation of water.

2.7.3 Supplies and Equipment

- Hand-held radios
- Keys
- Bullhorn
- Emergency water supplies
- Emergency food supplies
- Temporary power supplies
- Portable phones
- Sanitary supplies

2.7.4 Team Assembly Location

Inside: *Large Gym*

Outside: *Emergency Supply Bin*

Team Members will initially meet at the inside location. If the inside location is unavailable, Team Members will meet at the outside location.

2.8 ASSEMBLY AREA TEAM

The Assembly Area Team is responsible for the safe evacuation and accounting of all students and staff during an emergency. The team is also responsible for reporting missing persons to the Incident Commander.

2.8.1 Assignments

Assembly Area Team Leader: *Sarah Obloy*

Alternate Team Leader: *Tommy Elmore*

Assembly Area Team Member: *Available Staff*

Assembly Area Team Member: *Available Staff*

Assembly Area Team Member: *Available Staff*

2.8.2 Roles and Responsibilities

Assembly Area Team Leader

The Assembly Area Team Leader is responsible for directing team activities and periodically interacting with the Incident Command to identify problems and report status. The Assembly Area Team Leader is also responsible for collecting the Injury and Missing Persons Report (Form D, Appendix A) from the Team Members and make them readily available to the Incident Commander.

Assembly Area Team Members

The members of the Assembly Area Team are responsible for performing the safe evacuation of student and staff during an emergency. Specific duties of the members of the Assembly Area Team may include:

- Obtaining reports of missing students from teachers or other personnel.
- Gathering Injury and Missing Persons Report (Form D, Appendix A) from each teacher and submitting them to the Assembly Area Team Leader.
- Checking student emergency card for name of person(s) authorized to pick up student.

- Assisting the Reunion Gate Team as required.

2.8.3 Supplies and Equipment

- Copy of Site Plot Plan and Vicinity Map showing designated on and off site Assembly Areas
- Injury and Missing Persons Report (Form D, Appendix A)

2.8.4 Team Assembly Location

Inside: *Large Gym*

Outside: *PE Blacktop*

Team Members will initially meet at the inside location. If the inside location is unavailable, Team Members will meet at the outside location.

2.9 REQUEST GATE TEAM

The Request Gate Team is responsible for processing parent requests for student release during an emergency.

2.9.1 Assignments

Request Gate Team Leader: *Tadeo Climaco*

Alternate Team Leader: *Amparo Martinez*

Request Gate Team Member: *Hortencia Villegas*

Request Gate Team Member: *Jessica Rayas*

Request Gate Team Member: *Available Staff*

2.9.2 Roles and Responsibilities

Request Gate Team Leader

The Request Gate Team Leader is responsible for directing team activities and periodically interacting with the Incident Commander to identify problems and report status. The Request Gate Team Leader will refer all outside requests for information to the Public Information Officer.

Request Gate Team Members

The members of the Request Gate Team are responsible for greeting parents, guardians, or designees and providing them with tags or other identifications authorizing the holders to reunite with their students at the Reunion Gate. Specific duties of the members of the Request Gate Team may include:

- Greeting and directing parents, guardians, or designees to the counselors as appropriate.
- Providing reassurance to parents, guardians, or designees and maintaining order.
- Issuing a tag or other identifications only to an authorized person.
- Directing parents or guardians to the Reunion Gate.

2.9.3 Supplies and Equipment

- Keys to Main Gate
- Bullhorn
- Tags or other identifications

2.9.4 Assembly Location

Outside: *Haynes Gate*

The Request Gate team is to assemble at the main entrance.

2.10 REUNION GATE TEAM

The Reunion Gate Team is responsible for reuniting parents or guardians with students. This can be a highly sensitive role due to the fact that some parents will be informed that their children may be injured, missing or dead. The team will keep accurate records of students leaving the campus.

2.10.1 Assignments

Reunion Gate Team Leader: *Missindy Wilkins*

Alternate Team Leader: *Patty Perez*

Reunion Gate Team Member: *Jose Alcala*

Reunion Gate Team Member: *Michael Powell*

Reunion Gate Team Member: *Margarita Ponce*

2.10.2 Roles and Responsibilities

Reunion Gate Team Leader

The Reunion Gate Team Leader is responsible for directing team activities and periodically interacting with the Incident Commander to identify problems and report status. The Reunion Gate Team Leader will refer all requests for information to the Public Information Officer. The Reunion Gate Team Leader is also responsible for collecting the Student Release Log (Form E Appendix A) from the Team Members and have them readily available to Incident Commander.

Reunion Gate Team Members

The members of the Reunion Gate Team are responsible for greeting parents, guardians, and designees and reuniting them with their students at the designated Reunion Gate. Specific duties of the members of the Reunion Gate Team may include:

- Greeting parents, guardians, and designees at the Reunion Gate.

- Verifying the authenticity of the tags or other identifications.
- Dispatching Student Runners to Assembly Area to escort students whose parents have come to claim them.
- Providing reassurance to parents, guardians, and designees and directing them to the Reunion Area to wait for their children.
- Confirming students recognize the authorized adults who come to claim them and requiring adult to sign student out of school.
- Completing Student Release Log (Form E, Appendix A) and submitting them to the Reunion Gate Team Leader.

2.10.3 Supplies and Equipment

- Hand-held radios
- Tables and chairs (from nearby classrooms)
- Keys to Reunion Gate
- Materials for sign-out log
- Student Release Log (Form E, Appendix A)

2.10.4 Assembly Location

Outside: *Haynes Parking Lot*

The team is to assemble at the Reunion Area.

2.11 FIRE SUPPRESSION AND HAZMAT TEAM

The Fire Suppression and HazMat Team is responsible for extinguishing fires and evaluating the potential release of chemicals during an emergency. It is also responsible for evaluating the damages to school property in an emergency. This team will coordinate with the Incident Commander. The Fire Suppression and HazMat Leader is also responsible for gathering the Damage Assessment Report Form (Form F, Appendix A) from the Team Members and have them readily available to the Incident Commander.

2.11.1 Assignments

Fire Suppression and HazMat Team Leader: *Andres Salvatierra*

Alternate Team Leader: *Ryan Walker*

Fire Suppression and HazMat Team Member: *Josh Bertram*

Fire Suppression and HazMat Team Member: *BnG*

Fire Suppression and HazMat Team Member: *BnG*

2.11.2 Roles and Responsibilities

Fire Suppression and HazMat Team Leader

The Fire Suppression and HazMat Team Leader is responsible for directing team activities and periodically interacting with the Incident Command to identify problems and report status. The Fire Suppression and HazMat Team Leader is also responsible for gathering the Damage Assessment Report Forms (Form F, Appendix A) from the Team Members and have them readily available to the Incident Commander.

Fire Suppression and HazMat Team Members

The members of the Fire Suppression and HazMat Team are responsible for extinguishing fires, evaluating the potential release of chemicals during an emergency, observing the campus, logging and reporting any damage by radio to

the Command Post during an emergency. Copies of the Damage Assessment Report Form (Form F, Appendix A) will be submitted to the Team Leader. Specific duties of the members of the Fire Suppression and HazMat Team may include:

- Extinguishing fires on campus.
- Evaluating potential release of chemicals.
- Identifying damaged areas on the Damage Assessment Report Form (Form F, Appendix A). Reporting will be supplemented by pictures if appropriate.
- Locating and extinguishing small fires as appropriate.
- Checking gas meter and, if gas is leaking shutting down gas supply.
- Shutting down electricity only if building has clear structural damage or advised to do so by Command Post.
- Posting yellow caution tape around damaged or hazardous areas.

2.11.3 Supplies and Equipment

- Vest or position identifier
- Fire fighting equipment
- Hand-held radio
- Master keys
- Clipboard with job duties
- Fire fighting equipment
- Carry bucket or duffel bag with goggles, flashlight, dust masks, yellow caution tape, and utility shutoff tools
- Notebook containing site maps
- Damage Assessment Report Form (Form F, Appendix A)

2.11.4 Team Assembly Location

Inside: *Large Gym*

Outside: *Emergency Supply Bin*

Team Members will initially meet at the inside location. If the inside location is unavailable, Team Members will meet at the outside location.

2.12 DOCUMENTATION POSITION (OPTIONAL)

The Document position is responsible for maintaining a log of all emergency developments and response actions, including financial expenditures, timekeeping, and other necessary documentation.

2.12.1 Assignments

Documentation Staff Member: *Sarah Obloy*

Alternate Documentation Staff Member: *Nicole Mathews*

2.12.2 Roles and Responsibilities

The Documentation Staff Member will maintain a log of the incident, noting all actions and reports, and filing them for reference. Specific duties may include:

- Periodically communicating with the Incident Commander for status updates.
- Documenting all communications with District Emergency Operations Center (EOC) and outside agencies.
- Recording the number of students, staff and others on campus and updating it periodically.
- Reporting missing persons, and documenting site damage and first aid needs with the Incident Commander.
- Ensuring that accurate records are kept of all staff members, indicating hours worked.
- Supporting the Incident Commander in making any purchases and keeping track of the cost.
- Filing, maintaining and securing all emergency documentation.

2.12.3 Supplies and Equipment

- Hand-held radios
- File boxes
- Paper, pens

2.12.4 Assembly Location

Large Gym/PE Blacktop

The Documentation Staff Member will report to the Command Post.

2.13 COMMUNICATIONS POSITION (OPTIONAL)

The Communications position is responsible for the analysis of emergency information, identifying potential changes in emergency conditions, and maintaining the “status board.”

2.13.1 Assignments

Communications Staff Member: *Maricela Lomeli*

Alternate Communications Staff Member: *Angie Diaz*

2.13.2 Roles and Responsibilities

The Communications Staff Member will collect, organize and analyze situation information and provide periodic updates. Specific duties may include:

- Updating site maps as reports and other information are received.
- Preserving maps as legal document.
- Using area-wide map to record information on major incidents such as road closures, utility outages, etc.
- Developing situation reports for the Incident Command Team.

2.13.3 Supplies and Equipment

- Hand-held radios
- Paper, pens, dry-erase pens
- File box(es)
- Large site map of campus, laminated or covered with Plexiglas,
- Map of county or local area

2.13.4 Assembly Location

Principal's Conference Room/PE Blacktop

The Communications Staff Member will report to the Command Post.

2.14 SCHOOL STAFF

California Government Code, Chapter 8, Section 3100 states: “...all public employees are hereby declared to be disaster service workers subject to disaster service activities as may be assigned to them by their superiors or by law.” In accordance with these provisions, all staff members are considered “disaster service workers” during emergencies and must remain on site to carry out assigned responsibilities.

School staff should be familiar with emergency procedures and any assigned responsibilities. During an emergency, staff will serve on response teams and implement response procedures. If a teacher has been assigned to a position in the following list, the teacher will first accompany the students to the Assembly Area, where they will be reassigned to another teacher. The teacher will then carry out assigned responsibilities.

2.15 Office of Environmental Health and Safety

The Office of Environmental Health and Safety (OEHS) is responsible for providing guidance to school administrators in the areas of emergency preparedness and response.

2.16 PREPAREDNESS PROCEDURES

2.16.1 Management

1. The Principal will annually conduct an Emergency Hazard Assessment to evaluate unique site characteristics and conditions in the adjoining community that could cause an emergency incident. The Emergency Hazard Assessment Summary (Form A, Appendix A) should be used for this purpose.
2. The Principal will designate primary and secondary Command Post locations and ensure that these locations are identified in Section 2.0.
3. The Principal will ensure effective communication between the Command Post and Team Section Chiefs during an emergency. These procedures will be included in the Section 2.0.
4. The Principal will ensure that members of the Incident Command Team (Public Information Officer, Safety Coordinator, and Agency Liaison), and all other team leaders and members are aware of their responsibilities and assignments as defined in this section.
5. The Principal will ensure that emergency response actions are properly documented as they occur, and that appropriate procedures are included in this plan.

2.16.2 Planning/Intelligence

1. The Principal will ensure that all team members receive proper training in the use of communication equipment.
2. The Principal will ensure all teams are provided with instructions for the use and maintenance of maps and “status boards” at the Command Post.

2.16.3 Operations

1. The Principal will ensure that this plan includes procedures for the following:
 - Administering first aid;
 - Activating and performing search and rescue operations;
 - Ensuring site security;
 - Conducting damage assessments;

- Evacuation; and
 - Student release operations.
2. The Principal will ensure appropriate training is provided for the following teams:
 - First Aid/Medical Team;
 - Psychological First Aid Team;
 - Fire Suppression and HazMat Team
 - Search and Rescue Teams; and
 - Assembly Area Team.
 3. The Principal will ensure that routine drills referenced in Section 6.7 are conducted at the school to rehearse emergency response operations.
 - Drills will be conducted at elementary schools at least once per month.
 - Drills will be conducted at secondary schools at least twice per year.

2.16.4 Logistics

1. The Principal will ensure this plan includes appropriate procedures for coordinating and assembling personnel and volunteers in the event of an emergency.
2. The Principal will ensure that adequate emergency supplies are maintained and readily available for emergency use. *Please refer to Section 2.0 for a list of supplies for each emergency team and Section 6.6 for the schools' emergency supplies.*

2.16.5 Finance/Administration

The Principal will assure the following:

1. Purchase of all required emergency preparedness and response equipment and supplies;
2. Tracking of emergency expenditures, and recovery of records damaged or lost in an emergency.

3.0 INITIAL RESPONSE TO EMERGENCIES

When an emergency situation occurs, school personnel must quickly determine what initial response actions are required. Determining the appropriate actions to take is a three-step process: 1) identify the type of emergency; 2) identify the level of emergency; and 3) determine immediate action(s) that may be required. Each of these steps is discussed in the following sections. Procedures for specific response actions are provided in Sections 4.0 and 5.0.

3.1 IDENTIFY TYPE OF EMERGENCY

The first step in responding to an emergency is to determine the *type* of emergency that has occurred. Emergency procedures for the 18 different types of emergencies listed below are provided in Section 5.0.

- Aircraft Crash
- Animal Disturbance
- Armed Assault on Campus
- Biological or Chemical Release
- Bomb Threat
- Bus Disaster
- Disorderly Conduct
- Earthquake
- Explosion/Risk of Explosion
- Fire in Surrounding Area
- Fire On School Grounds
- Flooding
- Loss or Failure of Utilities
- Motor Vehicle Crash
- Psychological Trauma
- Suspected Contamination of Food or Water
- Threat of Violence
- Unlawful Demonstration/Walkout

3.2 IDENTIFY LEVEL OF EMERGENCY

The second step in responding to an emergency is to determine the *level* of the emergency. For schools, emergency situations can range from a small fire to a major earthquake. To assist schools in classifying emergency situations, a three-tiered rating system is described below.

Level 1 Emergency: A *minor* emergency that is handled by school personnel without assistance from outside agencies, e.g., a temporary power outage, a minor earthquake, or a minor injury in the play yard.

Level 2 Emergency: A *moderate* emergency that requires assistance from outside agencies, such as a fire or a moderate earthquake, or a suspected act of terrorism involving the dispersion of a potentially hazardous material, e.g., “unknown white powder”.

Level 3 Emergency: A *major* emergency event that requires assistance from outside agencies such as a major earthquake, civil disturbance or a large-scale act of terrorism. For Level 3 emergencies, it is important to remember that the response time of outside agencies may be seriously delayed.

3.3 DETERMINE IMMEDIATE RESPONSE ACTIONS

Once the type and extent of an emergency have been identified, school personnel can determine if an *immediate response action* is required. The most common immediate response actions initiated during school emergencies are:

- Duck and Cover
- Shelter-In-Place
- Lock Down
- Evacuate Building
- Off-Site Evacuation
- All Clear

Procedures for each of these are included in Section 4.0.

4.0 IMMEDIATE RESPONSE ACTIONS

4.1 DUCK AND COVER

This action is taken to protect students and staff from flying or falling debris.

Description of Action

1. The Principal will make the following announcement on the PA system. If the PA system is not available, the Principal will use other means of communication, i.e., sending messengers to deliver instructions. The Principal should be calm, convey reassuring comments that the situation is under control and give clear directions.

“YOUR ATTENTION PLEASE. AS YOU ARE AWARE, WE ARE EXPERIENCING SOME SEISMIC ACTIVITY. FOR EVERYONE’S PROTECTION, ALL STUDENTS SHOULD FOLLOW STAFF DUCK AND COVER PROCEDURES, WHICH MEAN YOU SHOULD BE IN A PROTECTED POSITION UNDER A TABLE OR DESK, AWAY FROM WINDOWS AND ANYTHING THAT COULD FALL AND HURT YOU. HOLD THIS POSITION UNTIL THE SHAKE STOPS OR GIVEN FURTHER INSTRUCTIONS.”

2. If inside, teachers will instruct students to duck under their desks and cover their heads with their arms and hands.
3. If outside, teachers will instruct students to drop to the ground, place their heads between their knees, and cover their heads with their arms and hands.
4. Teachers and students should move away from windows.

4.2 SHELTER-IN-PLACE

This action is taken to place and/or keep students indoors in order to provide a greater level of protection from airborne contaminants in outside air. Shelter-in-Place is implemented when there is a need to isolate students and staff from the outdoor environment, and includes the shut down of classroom and/or building HVAC systems. During Shelter-in-Place, no one should be exposed to the outside air.

The difference between Shelter-in-Place and Lock Down is that the former involves shut down of the HVAC systems, and allows for the free movement of students within the

building. However, classes in bungalows and buildings with exterior passageways will have to remain in the classroom.

Description of Action

1. The Principal will make the following announcement on the PA system. If the PA system is not available, the Principal will use other means of communication, i.e., sending messengers to deliver instructions. The Principal should be calm, convey reassuring comments that the situation is under control and give clear directions.

“YOUR ATTENTION PLEASE. BECAUSE WE HAVE RECEIVED INFORMATION REGARDING A HAZARD IN THE COMMUNITY, WE ARE INSTITUTING SHELTER-IN-PLACE PROCEDURES. REMEMBER, THIS MEANS STUDENTS AND STAFF ARE TO REMAIN INSIDE THE BUILDING AWAY FROM OUTSIDE AIR WITH WINDOWS AND DOORS SECURELY CLOSED AND AIR CONDITIONING UNITS TURNED OFF. ALL STUDENTS AND STAFF THAT ARE OUTSIDE ARE TO IMMEDIATELY MOVE TO THE PROTECTION OF AN INSIDE ROOM. AS SOON AS WE HAVE FURTHER INFORMATION, WE WILL SHARE IT WITH YOU.”

2. If inside, teachers will keep students in the classroom until further instructions are given.
3. If outside, students will proceed to their classrooms if it is safe to do so. If not, teachers or staff will direct students into nearby classrooms or school buildings (e.g., auditorium, library, cafeteria, gymnasium). Teachers should consider the location and proximity of the identified hazard and, if necessary, proceed to an alternative indoor location.
4. Teachers are responsible to secure individual classrooms whereas the Security/Utilities Team will assist in completing the procedures as needed: shut down the classroom/building(s) HVAC system; turn off local fans in the area; close and lock doors and windows; seal gaps under doors and windows with wet towels or duct tape; seal vents with aluminum foil or plastic wrap, if available; and turn off sources of ignition, such as pilot lights.

4.3 LOCK DOWN

This action is taken when the threat of violence or gunfire is identified or directed by law enforcement and it is necessary to prevent the perpetrator(s) from entering occupied areas. During Lock Down, students are to remain in the classrooms or designated locations at all time.

The difference between Shelter-in-Place and Lock Down is that the former involves shut down of the HVAC systems, and allows for the free movement of students within the building.

Description of Action

1. The Principal will make the following announcement on the PA system. If the PA system is not available, the Principal will use other means of communication, i.e., sending messengers to deliver instructions. The Principal should be calm, convey reassuring comments that the situation is under control and give clear directions.

“YOUR ATTENTION PLEASE. WE HAVE AN EMERGENCY SITUATION AND NEED TO IMPLEMENT LOCK DOWN PROCEDURES. TEACHERS ARE TO LOCK CLASSROOM DOORS AND KEEP ALL STUDENTS INSIDE THE CLASSROOM UNTIL FURTHER NOTICE. DO NOT OPEN THE DOOR UNTIL NOTIFIED BY AN ADMINISTRATOR OR LAW ENFORCEMENT. IF OUTSIDE, STUDENTS AND STAFF ARE TO PROCEED INSIDE THE NEAREST BUILDING OR CLASSROOM.”

2. If inside, teachers will instruct students to lie on the floor, lock the doors, and close any shades or blinds if it appears safe to do so.
3. If outside, students will proceed to their classrooms if it is safe to do so. If not, teachers or staff will direct students into nearby classrooms or school buildings (e.g., auditorium, library, cafeteria, gymnasium).
4. Teachers and students will remain in the classroom or secured area until further instructions are given by the Principal or law enforcement.

5. The front entrance is to be locked and no visitors other than appropriate law enforcement or emergency personnel, have to be allowed on campus.

4.4 EVACUATE BUILDING

This action is taken after the decision is made that it is unsafe to remain in the building.

Description of Action

1. The Principal will make the following announcement on the PA system. If the PA system is not available, the Principle will use other means of communication, i.e., sending messengers to deliver instructions. The Principal should be calm, convey reassuring comments that the situation is under control and give clear directions.

“YOUR ATTENTION PLEASE. WE NEED TO INSTITUTE AN EVACUATION OF ALL BUILDINGS. TEACHERS ARE TO TAKE THEIR STUDENTS TO THE ASSEMBLY AREA AND REPORT TO THEIR DESIGNATED AREA. STUDENTS ARE TO REMAIN WITH THEIR TEACHER. TEACHERS NEED TO TAKE THEIR ROLLBOOK AND LOCK THE CLASSROOM WHEN ALL STUDENTS HAVE EXITED THE CLASSROOM.”

2. The Principal will initiate a fire alarm.
3. Teachers will instruct students to evacuate the building, using designated routes, and assemble in their assigned *Assembly Area*.
4. Teachers will take the student roster when leaving the building and take attendance once the class is assembled in a safe location.
5. Once assembled, teachers and students will stay in place until further instructions are given.

4.5 OFF-SITE EVACUATION

This action is taken after a decision is made that it is unsafe to remain on the campus, and evacuation to an off-site assembly area is required.

Description of Action

1. The Principal will make the following announcement on the PA system. If the PA system is not available, the Principle will use other means of communication, i.e., sending messengers to deliver instructions. The Principal should be calm, convey reassuring comments that the situation is under control and give clear directions.

“YOUR ATTENTION PLEASE. WE NEED TO INSTITUTE AN OFF-SITE EVACUATION. TEACHERS ARE TO TAKE THEIR STUDENTS TO THE OFF-SITE ASSEMBLY AREA AND REPORT TO THEIR DESIGNATED AREA. STUDENTS ARE TO REMAIN WITH THEIR TEACHER. TEACHERS NEED TO TAKE THEIR ROLLBOOK AND LOCK THE CLASSROOM WHEN ALL STUDENTS HAVE EXITED THE CLASSROOM.”

2. The Principal will determine the safest method for evacuating the campus. This may include the use of school buses or simply walking to the designated off-site location. The off-site assembly areas are indicated on the Vicinity Map in Appendix C.
3. Teachers will secure the student roster when leaving the building and take attendance once the class is assembled in a pre-designated safe location.
4. Once assembled off-site, teachers and students will stay in place until further instructions are given.
5. In the event clearance is received from appropriate agencies, the Principal may authorize students and staff to return to the classrooms.

4.6 ALL CLEAR

This action is taken to notify teachers that normal school operations can resume.

Description of Action

1. The Principal will make the following announcement on the PA system. If the PA system is not available, the Principal will use other means of communication, i.e., sending messengers to deliver instructions.

“YOUR ATTENTION PLEASE. IT IS NOW OK TOO RETURN TO YOUR CLASSROOM AND RESUME NORMAL OPERATIONS. I WOULD LIKE TO THANK AND COMMEND STUDENTS AND STAFF FOR THEIR COOPERATION.”

2. This action signifies the emergency is over.
3. If appropriate, teachers should immediately begin discussions and activities to address students’ fears, anxieties, and other concerns.

5.0 EMERGENCY PROCEDURES

This section describes the specific procedures school staff will follow during the eighteen emergencies listed below:

- Aircraft Crash
- Animal Disturbance
- Armed Assault on Campus
- Biological or Chemical Release
- Bomb Threat
- Bus Disaster
- Disorderly Conduct
- Earthquake
- Explosion/Risk of Explosion
- Fire in Surrounding Area
- Fire On School Grounds
- Flooding
- Loss or Failure of Utilities
- Motor Vehicle Crash
- Psychological Trauma
- Suspected Contamination of Food or Water
- Threat of Violence
- Unlawful Demonstration/Walkout

It is important to note that school administrators are responsible for the health and safety of students and staff during an emergency. Although the following procedures refer to specific actions, school administrators must exercise discretion in implementing standardized procedures, and should consider modifications as necessary to assure the health and safety of all personnel during an emergency.

In the following procedures, the Principal or designee will be referred to as “School Administrator”.

5.1 AIRCRAFT CRASH

This procedure addresses situations involving an **Aircraft Crash** on or in proximity to school property. If a crash results in a fuel or chemical spill on school property, refer to Section 5.4, Biological or Chemical Release. If a crash results in a utility interruption, refer to Section 5.13, Loss or Failure of Utilities.

Procedure

1. The School Administrator will initiate appropriate Immediate Response Actions, which may include DUCK AND COVER, SHELTER-IN-PLACE, EVACUATE BUILDING, or OFF-SITE EVACUATION as described in Section 4.0.
2. If the School Administrator issues the EVACUATE BUILDING action, staff and students will evacuate the buildings using prescribed routes or other safe routes to the Assembly Area.
3. In the event of an evacuation, teachers will bring their student roster and take attendance at the Assembly Area to account for students. Teachers will notify the Assembly Area Team of missing students.
4. The School Administrator will call “911” and School Police (213) 625-6631 and will provide the exact location (e.g., building or area) and nature of emergency.
5. If on school property, the Security/Utilities Team will secure the crash area to prevent unauthorized access. If the crash results in a fuel or chemical spill on school property, refer to Section 5.4. If the crash results in a utility interruption, refer to Section 5.13.
6. The School Administrator will direct the Fire Suppression and HazMat Team to organize fire suppression activities until the Fire Department arrives.
7. The First Aid/Medical Team will check injuries to provide appropriate first aid.
8. The School Administrator will call the office of the Local District Superintendent. A member of this group will call the Office of Communications with information on this situation as appropriate.
9. Any affected areas will not be reopened until the Los Angeles County HazMat or appropriate agency provides clearance and the School Administrator issues authorization to do so.
10. The Psychological First Aid Team will convene onsite and begin the process of counseling and recovery as appropriate.
11. If it is unsafe to remain on campus, the School Administrator will initiate an OFF-SITE EVACUATION, as described in Section 4.0 if warranted by changes in conditions.

5.2 ANIMAL DISTURBANCE

This procedure should be implemented when the presence of a dog, coyote, mountain lion or any other wild animal threatens the safety of students and staff.

Procedure

1. The School Administrator will initiate appropriate Immediate Response Actions, which may include LOCK DOWN or EVACUATE BUILDING as described in Section 4.0.
2. Upon discovery of an animal, staff members will attempt to isolate the animal from students, if it is safe to do so. If the animal is outside, students will be kept inside. If the animal is inside, students will remain outside in an area away from the animal. It is suggested closing doors or locking gates as means to isolate the animal.
3. If additional outside assistance is needed, the School Administrator will call “911”, School Police (213) 625-6631, Animal Control and/or the Department of Fish and Game (562) 590-5132 and provide the location of the animal and nature of emergency.
4. If a staff member or student is injured, the School Nurse, the parent, and Student Medical Services will be notified.
5. The School Administrator will initiate an OFF-SITE EVACUATION, as described in Section 4.0, if warranted by changes in conditions at the school.

5.3 ARMED ASSAULT ON CAMPUS

An **Armed Assault on Campus** involves one or more individuals who attempt to take hostages or cause physical harm to students and staff. Such an incident may involve individuals who possess a gun, a knife or other harmful device.

Procedure

1. Upon first indication of an armed assault, personnel should immediately notify the School Administrator.
2. The School Administrator will initiate the appropriate Immediate Response Action(s), which may include SHELTER-IN-PLACE, LOCK DOWN, EVACUATE BUILDING or OFF-SITE EVACUATION as described in Section 4.0.
3. The School Administrator will call “911” and School Police (213) 625-6631, and provide the exact location and nature of the incident. The School Administrator should designate a person to remain online with Police if safe to do so. If there is an assigned officer on campus, they shall be notified.
4. Staff should take steps to calm and control students, and if safe to do so, attempt to maintain separation between students and the perpetrator.
5. Staff should maintain order in all areas of assembly or shelter, and should await the arrival of law enforcement.
6. After the perpetrator(s) has been neutralized, the School Administrator will conduct a headcount of students and staff, and will notify law enforcement of any missing persons.
7. The First Aid/Medical Team will work with local authorities to ensure injured students and staff receive medical attention.
8. The Security/Utilities Team will control all points of entry to the school.
9. The School Administrator will prepare a verified list of casualties, and the locations to which they were transported. The School Administrator will confer with the Psychological First Aid Team to ensure the notification of parents and family members.
10. All media inquiries will be referred to the designated Public Information Officer.
11. The School Administrator will debrief staff and school police officers.

5.4 BIOLOGICAL OR CHEMICAL RELEASE

A **Biological or Chemical Release** is an incident involving the discharge of a biological or chemical substance in a solid, liquid or gaseous state. Such incidents may also include the release of radioactive materials. Common chemical threats within or adjacent to schools include the discharge of acid in a school laboratory, an overturned truck of hazardous materials in proximity of the school, or an explosion at a nearby oil refinery or other chemical plant.

The following indicators may suggest the release of a biological or chemical substance: Multiple victims suffering from watery eyes, twitching, choking or loss of coordination, or having trouble breathing. Other indicators may include the presence of distressed animals or dead birds.

This procedure deals with three possible scenarios involving the release of biochemical substances: Scenario 1 - Substance released inside a room or a building; Scenario 2 - Substance released outdoors and localized; and Scenario 3 - Substance released in surrounding community. It is necessary to first determine which scenario applies and then implement the appropriate response procedures listed below.

Procedure

SCENARIO 1: SUBSTANCE RELEASED INSIDE A ROOM OR BUILDING

1. The School Administrator will initiate the EVACUATE BUILDING action as described in Section 4.0. Staff will use designated routes or other alternative safe routes to an assigned Assembly Area, located upwind of the affected room or building.
2. The School Administrator will call “911”, School Police (213) 625-6631 and the Office of Environmental Health and Safety (OEHS) (213) 241-3199 and will provide the exact location (e.g., building, room, area) and nature of emergency.
3. The School Administrator will notify the Local District Superintendent of the situation.
4. The School Administrator will instruct the Security/Utilities Team to isolate and restrict access to potentially contaminated areas.
5. The Security/Utilities Team will turn off local fans in the area of the release, close the windows and doors, and shut down the building’s air handling system.
6. Persons who have come into direct contact with hazardous substances should have affected areas washed with soap and water. Immediately remove and contain contaminated clothes. Do not use bleach or other disinfectants on potentially exposed skin. Individuals that have been contaminated “topically” by a liquid should be segregated from unaffected individuals (isolation does not apply to widespread airborne releases). A member of the First Aid/Medical Team should assess the need for medical attention.
7. The Assembly Area Team will prepare a list of all people in the affected room or contaminated area, specifying those who may have had actual contact with the substance. The Assembly Area Team will provide the list to the School Administrator and the emergency response personnel.
8. The School Administrator will complete the Biological and Chemical Release Response Checklist (Form B, Appendix A).
9. The Psychological First Aid Team will convene onsite and begin the process of counseling and recovery.
10. Any affected areas will not be reopened until the Los Angeles County HazMat or appropriate agency provides clearance and the School Administrator gives authorization to do so.

SCENARIO 2: SUBSTANCE RELEASED OUTDOORS AND LOCALIZED

1. The School Administrator will immediately direct staff to remove students from the affected areas to an area upwind from the release. The School Administrator will, if necessary, initiate the EVACUATE BUILDING action as described in Section 4.0.
2. The Security/Utilities Team will establish a safe perimeter around the affected area and ensure personnel do not reenter the area.
3. The School Administrator will call “911”, School Police (213) 625-6631 and the Office of Environmental Health and Safety (OEHS) (213) 241-3199 and will provide the exact location and nature of emergency.
4. The School Administrator will notify the Local District Superintendent of the situation.
5. The Security/Utilities Team will turn off local fans in the area of the release, close the windows and doors and shut down the air handling systems of affected buildings.
6. Persons who have come into direct contact with hazardous substances should have affected areas washed with soap and water. Immediately remove and contain contaminated clothes. Do not use bleach or other disinfectants on potentially exposed skin. Individuals that have been contaminated “topically” by a liquid should be segregated from unaffected individuals (isolation does not apply to widespread airborne releases). A member of the First Aid/Medical Team should assess the need for medical attention.
7. The Assembly Area Team will prepare a list of all people in areas of contamination, especially those who may have had actual contact with the substance. The Assembly Area Team will provide the list to the School Administrator and the emergency response personnel.
8. The Psychological First Aid Team will convene onsite and begin the process of counseling and recovery.
9. Any affected areas will not be reopened until the Los Angeles County HazMat or appropriate agency provides clearance and the School Administrator gives authorization to do so.

SCENARIO 3: SUBSTANCE RELEASED IN SURROUNDING COMMUNITY

1. If the School Administrator or local authorities determine a potentially toxic substance has been released to the atmosphere, the School Administrator will initiate SHELTER-IN-PLACE as described in Section 4.0.
2. Upon receiving the SHELTER-IN-PLACE notification, the Security/Utilities Team will turn off local fans in the area; close and lock doors and windows; shut down all buildings' air handling systems; seal gaps under doors and windows with wet towels or duct tape; seal vents with aluminum foil or plastic wrap, if available; and turn off sources of ignition, such as pilot lights.
3. Staff and students located outdoors will be directed to proceed immediately to nearby classrooms or buildings (e.g., auditorium, library, cafeteria, gymnasium). Teachers should communicate their locations to the School Administrator, using the PA system or other means without leaving the building.
4. The School Administrator will call "911", School Police (213) 625-6631 and the Office of Environmental Health and Safety (OEHS) (213) 241-3199 and will provide the exact location and nature of emergency.
5. The School Administrator will notify the Local District Superintendent of the situation.
6. The School Administrator will turn on a radio or television station to monitor information concerning the incident.
7. The school will remain in a SHELTER-IN-PLACE condition until the Los Angeles County HazMat or appropriate agency provides clearance, or staff is otherwise notified by the School Administrator.

5.5 BOMB THREAT

Response to a **Bomb Threat** is initiated upon the discovery of a suspicious package on campus grounds or receipt of a threatening phone call that may present a risk of an explosion.

Procedure

1. If the threat is received by telephone, the person receiving the call should attempt to keep the caller on the telephone as long as possible and alert someone else to call “911” – telling the operator, **“This is [state name] from [state school]. We are receiving a bomb threat on another line. The number of that line is [state phone number].”**
2. The person answering the threat call should ask the following questions, record the answers and then immediately notify the School Administrator:
 - When is the bomb going to explode?
 - Where is it?
 - What will cause it to explode?
 - What kind of bomb is it?
 - Who are you?
 - Why are you doing this?
 - What can we do for you to avoid the bomb from exploding?
 - How can you be contacted?
3. The School Administrator will direct the Search and Rescue Team(s) to search for suspicious packages, boxes or foreign objects. While conducting the search, all cell phones, beepers and hand-held radios should be turned off since many modern day explosive devices can be triggered by radio frequencies.
4. If a suspicious object is identified, one member of the Search and Rescue Team will report the discovery to the School Administrator while the remaining team members attempt to secure the immediate area.
5. No attempt should be made to investigate or examine the object.
6. After the search, the School Administrator will determine the appropriate Immediate Response Action(s) to announce, which may include DUCK AND COVER, LOCK DOWN, EVACUATE BUILDING or OFF-SITE EVACUATION as described in Section 4.0.
7. When a suspicious object or bomb is found, the School Administrator shall issue the EVACUATE BUILDING action. Staff and students will evacuate the building using prescribed routes or other safe routes to the Assembly Area.

8. In the event of an evacuation, Teachers will bring their student roster and take attendance at the Assembly Area to account for students. Teachers will notify the Assembly Area Team of missing students.
9. The School Administrator will notify “911”, if not previously notified, and School Police (213) 625-6631 and will provide the exact location (e.g., building, room, area) of the potential bomb, if known.
10. The School Administrator will notify the Local District Superintendent of the situation.
11. The Psychological First Aid Team will convene onsite and begin the process of counseling and recovery.
12. Do not resume school activities until the affected buildings have been inspected by proper authorities and determined to be safe. The School Administrator will give the ALL CLEAR signal as described in Section 4.0 when appropriate.
13. The School Administrator will initiate an OFF-SITE EVACUATION, as described in Section 4.0 if warranted by changes in conditions.
14. After the incident is over, the School Administrator will complete the Bomb Threat Report (Form C, Appendix A).

5.6 BUS DISASTER

These procedures are for use by bus drivers and school administrators in the event of an earthquake, serious bus accident, or other emergency that occurs while students are on a field trip or being transported to or from school. If there are no students on the bus, drivers should report to Bus Dispatch at 1-800-LABUSES or the nearest school.

This section addresses three possible scenarios involving a bus disaster: Scenario 1 - Earthquake; Scenario 2 - Flood; and Scenario 3 - Serious Accident or Bus Fire. Bus drivers should first determine which scenario applies and then implement the appropriate response procedures. A copy of these procedures shall be kept in the emergency packet of each school bus. It is important to note that drivers may need to make spontaneous independent decisions, based on the nature of the emergency, age of children, location of bus, or other unique circumstances

Procedure

SCENARIO 1: EARTHQUAKE

1. The driver should issue DUCK AND COVER action as described in Section 4.0.
2. Stop the bus away from power lines, bridges, overpasses, buildings, possible landslide conditions, overhanging trees, or other dangerous situations.
3. Set brake, turn off ignition, and wait for shaking to stop.
4. Check for injuries and provide first aid as appropriate.
5. If the bus is disabled, stay in place until help arrives.
6. Contact the School Administrator to report location and condition of students and the bus.
7. The School Administrator will determine what additional appropriate notification(s) should be made and will brief the office of the Local District Superintendent.
8. If instructed to continue route, the driver should:
 - If en route to school, continue to pick up students.
 - If dropping students off, continue to do so provided there is a responsible adult at the bus stop. If there is no responsible adult at the bus stop, refer to Number 9 below.

9. If it is impossible to return to school, proceed to the nearest designated shelter indicated on the bus route map. Upon arriving at the shelter, notify the School Administrator. Remain with the children until further instructions are received from the School Administrator.
10. In all instances, the driver should not attempt to cross bridges, overpasses, or tunnels that may have been damaged.
11. The driver will account for all students and staff throughout the emergency.

SCENARIO 2: FLOOD

1. DO NOT drive through flooded streets and/or roads.
2. Take an alternate route or wait for public safety personnel to determine safety.
3. If the bus is disabled, stay in place until help arrives.
4. Contact the School Administrator and Bus Dispatch at 1-800-LABUSES to report location and condition of students.
5. The School Administrator will determine what additional appropriate notification(s) should be made and will brief the office of the Local District Superintendent.
6. In all instances, do not attempt to cross damaged bridges or overpasses.
7. The driver will account for all students and staff throughout the emergency.

SCENARIO 3: SERIOUS ACCIDENT OR BUS FIRE

1. Park the bus in a safe location.
2. Set the emergency brake and turn off the ignition.
3. Evacuate the bus in the event of a fire.
4. Check for injuries and provide appropriate first aid.
5. Call “911” and School Police (213) 625-6631 and provide exact location of the bus and wait for arrival of emergency responders.
6. Contact the School Administrator and Bus Dispatch at 1-800-LABUSES to report location and condition of students.
7. The School Administrator will determine what additional appropriate notification(s) should be made and will brief the office of the Local District Superintendent.
8. Stay with the disabled bus until help arrives.
9. The driver will account for all students and staff throughout the emergency.

5.7 DISORDERLY CONDUCT

Disorderly Conduct may involve a student or staff member exhibiting threatening or irrational behavior. If the perpetrator is armed, refer to Section 5.3, Armed Assault on Campus.

Procedure

1. Upon witnessing a Disorderly Conduct, staff should take steps to calm and control the situation and attempt to isolate the perpetrator from other students and staff, if it is safe to do so.
2. Staff will immediately notify the School Administrator.
3. The School Administrator will initiate the appropriate Immediate Response Actions, which may include SHELTER-IN-PLACE, LOCK DOWN, EVACUATE BUILDING or OFF-SITE EVACUATION as described in Section 4.0.
4. The School Administrator will call School Police (213) 625-6631, and provide the exact location and nature of the incident. If determined to be appropriate, the School Administrator will call “911”.
5. If an immediate threat is not clearly evident, the School Administrator or a staff member may attempt to diffuse the situation. Approach the perpetrator in a calm, non-confrontational manner and request he or she leave the campus. Avoid any hostile situations.
6. If the perpetrator is a student, an attempt should be made to notify the family. (Family members may provide useful information on handling the situation.)
7. The School Administrator will notify the Local District Superintendent of the situation.

5.8 EARTHQUAKE

Earthquakes generally occur without warning and may cause minor to serious ground shaking, damage to buildings, and injuries. It is important to note that even a mild tremor can create a potentially hazardous situation and the following procedures should be implemented in response to all earthquakes regardless of magnitude.

Procedure

Note: Keep calm and remain where you are. Assess the situation, and then act. Remember, most injuries or deaths are the direct cause of falling or flying debris.

1. Upon the first indication of an earthquake, teachers should direct students to DUCK AND COVER as described in Section 4.0.
2. Move away from windows and overhead hazards to avoid glass and falling objects.
3. When the shaking stops, the School Administrator will initiate the EVACUATE BUILDING action as described in Section 4.0. Staff and students will evacuate the buildings using prescribed routes or other safe routes to the Assembly Area.
4. In the event of an evacuation, Teachers will bring their student roster and take attendance at the Assembly Area to account for students. Teachers will notify the Assembly Area Team of missing students.
5. The School Administrator will direct the Security/Utilities Team to post guards a safe distance away from building entrances to prevent access.
6. The Security/Utilities Team will notify school personnel of fallen electrical wires and instruct them to avoid touching the fallen wires.
7. The First Aid/Medical Team will check for injuries and provide appropriate first aid.
8. The School Administrator will direct the Security/Utilities Team to notify the appropriate utility company of damages (e.g., gas, power, water, or sewer).
9. If the area appears safe, the Search and Rescue Team will make an initial inspection of school buildings to identify any injured or trapped students or staff.
10. The School Administrator will contact the Local District Superintendent to determine additional actions that may be necessary. In turn, the actions will be communicated to the District's Office of Communications.

11. The School Administrator will contact the Local District Facilities Director to ensure buildings are safe for reoccupancy. When safe to do so, the Fire Suppression and HazMat Team will conduct an inspection of school buildings. The Fire Suppression and HazMat Team will maintain a log of their findings, by building, and provide a periodic report to the Incident Commander.
12. Any affected areas will not be reopened until the Local District Facilities provides clearance and the School Administrator gives authorization to do so.
13. The School Administrator will initiate an OFF-SITE EVACUATION, as described in Section 4.0, if warranted by changes in conditions at the school.

In the event an earthquake occurs during non- school hours:

1. The School Administrator and the Plant Manager will assess damages to determine any necessary corrective actions. The School Administrator may direct the Fire Suppression and HazMat Team to participate in the assessment.
2. The School Administrator should confer with the Local District Superintendent on identified damages to determine if the school should be closed.
3. If the school must be closed, the School Administrator will activate Parent Alert System and School Personnel Alert System as referenced in Section 5.0.

5.9 EXPLOSION/RISK OF EXPLOSION

This section addresses four possible scenarios involving an **Explosion/Risk of Explosion**: Scenario 1 - Explosion on school property; Scenario 2 – Risk of explosion on school property; Scenario 3 - Explosion or risk of explosion in a surrounding area, and Scenario 4 – Nuclear blast or explosion involving radioactive materials. *[A nuclear blast is characterized by a sequence of intense light and heat, air pressure wave, expanding fireball, and subsequent radioactive fallout.]* It is necessary to first determine which scenario applies and then implement the appropriate response procedures. For “Bomb Threats”, refer to Section 5.5.

Procedure

SCENARIO 1: EXPLOSION ON SCHOOL PROPERTY

1. In the event of an explosion, all persons should initiate DUCK AND COVER as described in Section 4.0.
2. The School Administrator will consider the possibility of another imminent explosion and take appropriate action.
3. After the explosion, the School Administrator will initiate appropriate Immediate Response Actions, which may include SHELTER-IN-PLACE, EVACUATE BUILDING or OFF-SITE EVACUATION as described in Section 4.0. Evacuation may be warranted in some buildings and other buildings may be used as shelter.
4. In the event of an evacuation, staff and students will use prescribed routes or other safe routes and proceed to the Assembly Area.
5. In the event of an evacuation, Teachers will bring their student roster and take attendance at the Assembly Area to account for students. Teachers will notify the Assembly Area Team of missing students.
6. The School Administrator will call “911” and School Police (213) 625-6631 and will provide the exact location (e.g., building, room, area) and nature of emergency.
7. The First Aid/Medical Team will check for injuries and provide appropriate first aid.
8. Staff should attempt to suppress fires with extinguishers. Note: Ensure the use of proper type of extinguishers, i.e. Class A, B or C for ordinary combustibles; Class B or C for fires involving flammable liquids; or Class C only for fires involving electrical equipment.

9. The Security/Utilities Team Leader will notify the appropriate utility company of any damages to water lines, sewers, power lines and other utilities.
10. The School Administrator will notify the Local District Superintendent of the situation. A member of this group will call the Office of Communications with information on the situation.
11. The Security/Utilities Team Leader will post guards a safe distance away from the building entrance to prevent persons entering the school buildings.
12. When it is determined safe to enter affected areas, the School Administrator will advise the Search and Rescue Team to initiate search and rescue activities.
13. The School Administrator will contact the Local District Facilities Director to ensure buildings are safe for reoccupancy. When safe to do so, the Fire Suppression and HazMat Team will conduct an inspection of school buildings. The Fire Suppression and HazMat Team will maintain a log of their findings, by building, and provide a periodic report to the Incident Commander.
14. Any areas affected by the explosion will not be reopened until the Los Angeles County HazMat or appropriate agency provides clearance and the School Administrator gives authorization to do so.
15. The School Administrator will initiate an OFF-SITE EVACUATION, as described in Section 4.0 if warranted by changes in conditions

SCENARIO 2: RISK OF EXPLOSION ON SCHOOL PROPERTY

1. The School Administrator will initiate appropriate Immediate Response Actions, which may include DUCK AND COVER, SHELTER-IN-PLACE, EVACUATE BUILDING, or OFF-SITE EVACUATION as described in Section 4.0.
2. If the School Administrator issues EVACUATE BUILDING action, staff and students will evacuate the building using prescribed routes or other safe routes to the Assembly Area.
3. In the event of an evacuation, Teachers will bring their student roster and take attendance at the Assembly Area to account for students. Teachers will notify the Assembly Area Team of missing students.
4. The School Administrator will call “911” and School Police (213) 625-6631 and will provide the exact location (e.g., building, room, area) and nature of emergency.
5. Staff should attempt to suppress fires with extinguishers. Note: Ensure the use of proper type of extinguishers, i.e. Class A, B or C for ordinary combustibles; Class B or C for fires involving flammable liquids; or Class C only for fires involving electrical equipment.
6. The School Administrator will advise the Search and Rescue Team to initiate rescue operations.
7. The Security/Utilities Team Leader will notify the appropriate utility company of any damages to water lines, sewers, power lines and other utilities.
8. The School Administrator will notify the Local District Superintendent of the situation.
9. All affected areas will not be reopened until the Los Angeles County HazMat or appropriate agency provides clearance and the School Administrator issues authorization to do so.
10. In the event of an explosion on campus, refer to procedures listed under Scenario 1 above.
11. The School Administrator will initiate an OFF-SITE EVACUATION, as described in Section 4.0 if warranted by changes in conditions.

SCENARIO 3: EXPLOSION OR RISK OF EXPLOSION IN SURROUNDING AREA

1. The School Administrator will initiate the SHELTER-IN-PLACE response action as described in Section 4.0.
2. The School Administrator will notify “911” and School Police (213) 625-6631 and will provide the exact location (e.g., building, area) and nature of emergency.
3. The School Administrator will take further actions as needed.
4. The school will remain in a SHELTER-IN-PLACE condition until the Los Angeles County HazMat or appropriate agency provides clearance and the School Administrator issues further instructions.

SCENARIO 4: NUCLEAR BLAST OR EXPLOSION INVOLVING RADIOACTIVE MATERIALS

1. The School Administrator will initiate the SHELTER-IN-PLACE response action as described in Section 4.0.
2. When sheltering, personnel should try to establish adequate barriers or shielding (e.g. concrete walls, metal doors) between themselves and the source of the blast or explosion, and should avoid sheltering near exterior windows.
3. The School Administrator will notify “911” and School Police (213) 625-6631 and provide details on the area and personnel affected at the school.
4. After the initial blast, remove students from rooms with broken windows, extinguish fires, provide first aid, and relocate students from upper floors if possible.
5. The Security/Utilities team will turn off the school’s main gas supply (refer to the Site Plot Plan in Appendix C for gas supply shut off valve), local fans in the area; close and lock doors and windows; shut down all buildings’ air handling systems; seal gaps under doors and windows with wet towels or duct tape; seal vents with aluminum foil or plastic wrap, if available; and turn off sources of ignition, such as pilot lights.
6. The School Administrator will monitor radio or television announcements and initiate further actions as appropriate.
7. At the School Administrator’s discretion, and only if safe to do so, designated personnel should attempt to distribute emergency supplies including food and water.
8. The school will remain in a SHELTER-IN-PLACE condition until the Los Angeles County HazMat or appropriate agency provides clearance and the School Administrator issues further instructions.

5.10 FIRE IN SURROUNDING AREA

This procedure addresses the situation where a fire is discovered in an area adjoining the school. The initiated response actions should take into consideration the location and size of the fire, its proximity to the school and the likelihood that the fire may affect the school.

Procedure

1. The School Administrator will initiate the appropriate Immediate Response Actions, which may include SHELTER-IN-PLACE, LOCK DOWN, EVACUATE BUILDING or OFF-SITE EVACUATION as described in Section 4.0.
2. The School Administrator will notify “911” and School Police (213) 625-6631 and will provide the location and nature of emergency.
3. The School Administrator will instruct the Security/Utilities Team to prevent students from approaching the fire and keep routes open for emergency vehicles.
4. The Agency Liaison will contact the local fire department and will work with the fire department to determine if school grounds are threatened by the fire, smoke, or other hazardous conditions.
5. If the School Administrator issues the EVACUATE BUILDING action, staff and student will evacuate the affected building(s) using prescribed routes or other safe routes to the Assembly Area.
6. In the event of an evacuation, Teachers will bring their student roster and take attendance at the Assembly Area to account for students. Teachers will notify the Assembly Area Team of missing students.
7. The School Administrator will keep a battery-powered radio tuned to a local radio station for emergency information.
8. As appropriate, the School Administrator will activate Parent Alert System.
9. The School Administrator will notify the Local District Superintendent of the emergency situation. A member of this group will call the Office of Communications with information of this situation.
10. If needed, the School Administrator will notify Bus Dispatch to request busses for staff and student evacuation.
11. The School Administrator will initiate an OFF-SITE EVACUATION, as described in Section 4.0 if warranted by changes in conditions.

5.11 FIRE ON SCHOOL GROUNDS

This procedure addresses situations where a fire is discovered on school grounds. A quick response to this situation is very important to prevent injuries and further property damage.

Procedure

1. Upon discovery of a fire, Teachers or staff will direct all occupants out of the building, signal the fire alarm, and report the fire to the School Administrator.
2. The School Administrator will immediately initiate the EVACUATE BUILDING action as described in Section 4.0. Staff and students will evacuate buildings using the prescribed routes or other safe routes to the Assembly Area.
3. In the event of an evacuation, Teachers will bring their student roster and take attendance at the Assembly Area to account for students. Teachers will notify the Assembly Area Team of missing students.
4. The School Administrator will call “911” and School Police (213) 625-6631 and will provide the exact location (e.g., building, room, area) of the fire.
5. The Fire Suppression and HazMat Team will suppress fires and initiate rescue procedures until the local fire department arrives.
6. The Security/Utilities Team will secure the area to prevent unauthorized entry and keep access roads clear for emergency vehicles.
7. The Agency Liaison will direct the fire department to the fire and brief fire department official on the situation.
8. The Security/Utilities Team will notify the appropriate utility company of damages.
9. The School Administrator will notify the Local District Superintendent of the fire. A member of this group will call the Office of Communications with information on this situation.
10. If needed, the School Administrator will notify Bus Dispatch to request busses for staff and student evacuation.
11. Any affected areas will not be reopened until the Los Angeles County Fire Department or appropriate agency provides clearance and the School Administrator issues authorization to do so.
12. For fires during non-school hours, the School Administrator and the Local District Superintendent will determine if the school will open the following day.
13. All fires, regardless of their size, which are extinguished by school personnel, require a call to the Fire Department to indicate “fire is out.”

5.12 FLOODING

This procedure applies whenever storm water or other sources of water inundate or threaten to inundate school grounds or buildings. Flooding may occur as a result of prolonged periods of rainfall, where the school would have sufficient time to prepare. Alternatively, flooding may occur without warning, as a result of damage to water distribution systems, or a failure of a nearby man-made dam.

Procedure

1. The School Administrator will initiate appropriate Immediate Response Actions, which may include SHELTER-IN-PLACE, EVACUATE BUILDING, or OFF-SITE EVACUATION, as described in Section 4.0.
2. The School Administrator will notify “911” and School Police (213) 625-6631 and will describe the nature and extent of the flooding.
3. The School Administrator will keep a battery-powered radio tuned to a local radio station for information.
4. If the School Administrator issues the EVACUATE BUILDING or OFF-SITE EVACUATION action, staff and students will evacuate affected buildings using prescribed routes or other safe routes to the Assembly Area.
5. In the event of an evacuation, Teachers will bring their student roster and take attendance at the Assembly Area to account for students. Teachers will notify the Assembly Area Team of missing students.
6. The School Administrator will notify the Local District Superintendent of the emergency situation. A member of this group will call the Office of Communications with information on this situation.
7. As appropriate, the School Administrator will activate Parent Alert System as referenced in Section 6.0.
8. The School Administrator will initiate an OFF-SITE EVACUATION, as described in Section 4.0 if warranted by changes in conditions

5.13 LOSS OR FAILURE OF UTILITIES

This procedure addresses situations involving a loss of water, power or other utility on school grounds. This procedure should also be used in the event of the discovery of a gas leak, an exposed electrical line, or a break in sewer lines.

Procedure

1. If water or an electrical line is broken, an effort should be made to turn off water or power to the affected area and to notify the School Administrator immediately.
2. Upon notice of loss of utilities, the School Administrator will initiate appropriate Immediate Response Actions, which may include SHELTER-IN-PLACE, or EVACUATE BUILDING, as described in Section 4.0.
3. The School Administrator will notify the Local Maintenance Area (Monday – Friday between the hours of 7:00 a.m. – 4:30 p.m.) or School Police (at all other days/hours) and will provide the location and nature of emergency. Appropriate personnel will also be notified at the discretion of the School Administrator.
4. Local Maintenance Area personnel, working with school administration, will contact the affected utility company to determine whether their assistance is required and the potential length of time service will be interrupted.
5. The School Administrator will notify the Local District Superintendent of the loss of utility service.
6. As needed, school emergency supplies will be utilized to compensate for the loss of a utility.
7. If the loss of utilities may generate a risk of explosion, such as a gas leak, refer to Section 5.9 Explosion/Risk of Explosion.
8. In addition to the procedures listed above, the Incident Commander will implement the following plans in the event utilities are disrupted.

A. Plan for a Loss of Water:

[Summarize a specific plan to provide for the following services in the event of a loss of water]. Reserve water has been treated and stored in containers in the emergency supply bin. Water will be drinkable for 4 years.

Toilets: (Specify a procedure by which a temporary toilet is provided in each classroom by using a trash receptacle, plastic bags, and where privacy is afforded). Please contact OEHS for specific guidance. Emergency classroom buckets have been updated and contain toilet seat and plastic bags.

Drinking Water: (Specify how emergency water supply will be accessed and distributed to students and staff). Emergency water will be accessible at Emergency Supply Bin. Pumps are stored to access water and foldable plastic jugs are on hand for distribution.

Food Service: Dry food will be stored in Emergency Food Shed.

Fire Suppression System (if applicable): Fire extinguishers available in all classrooms and in Emergency Supply Bin.

B. Plan for a Loss of Electricity:

[Summarize a specific plan to provide for the following services in the event of a loss of electricity]

Ventilation: *Relocate classrooms to alternative space outdoors*

Emergency Light: *4-hour battery automated back up, emergency back up lighting. 6 light towers available to act as generators. Three small generators also available.*

Other:

C. Plan for a loss of Natural Gas

[Summarize a specific plan to provide for the following services in the event of a loss of natural gas]

Food Service: Dry food will be stored in emergency storage shed. Still in process of collecting food.

Other:

D. Plan for a loss of Communication

[Summarize a specific plan to provide for the following services in the event of a loss of communication]

Telephone Service: *Emergency phone line in main office, cell phones may be used if possible, as well as intercom, and text distribution system through parent square.*

Other:

5.14 MOTOR VEHICLE CRASH

This procedure addresses situations involving a **Motor Vehicle Crash** on or immediately adjacent to school property. If a crash results in a fuel or chemical spill on school property, refer to Section 5.4, Biological or Chemical Release. If a crash results in a utility interruption, refer to Section 5.13, Loss or Failure of Utilities.

Procedure

1. The School Administrator will initiate appropriate Immediate Response Actions, which may include DUCK AND COVER, SHELTER-IN-PLACE, EVACUATE BUILDING, or OFF-SITE EVACUATION as described in Section 4.0.
2. If the School Administrator issues the EVACUATE BUILDING action, staff and students will evacuate the buildings using prescribed routes or other safe routes to the Assembly Area.
3. In the event of an evacuation, Teachers will bring their student roster and take attendance at the Assembly Area to account for students. Teachers will notify the Assembly Area Team of missing students.
4. The School Administrator will call “911” and School Police (213) 625-6631 and will provide the exact location (e.g., building, area) and nature of emergency.
5. The School Administrator will notify the Local District Superintendent of the situation. A member of this group will call the Office of Communications with information on this situation.
6. The Security/Utilities Team will secure the crash area to prevent unauthorized access. If the crash results in a fuel or chemical spill, refer to Section 5.4. If the crash results in a utility interruption, refer to Section 5.13.
7. The School Administrator will direct the Fire Suppression and HazMat Team to organize fire suppression activities until the Fire Department arrives.
8. The First Aid/Medical Team will check for injuries to provide appropriate first aid.
9. Any affected areas will not be reopened until the Los Angeles County HazMat or appropriate agency provides clearance and the School Administrator issues authorization to do so.
10. The School Administrator will initiate an OFF-SITE EVACUATION, as described in Section 4.0 if warranted by changes in conditions.

5.15 PSYCHOLOGICAL TRAUMA

Crisis management at LAUSD specifies actions during and subsequent to any emergency that may have a psychological impact on students and staff, such as an act of violence; the death of a student or staff member; an earthquake or other natural disaster; a serious environmental problem; or ethnic and racial tensions. Emergencies like those described above usually produce one or more of the following conditions:

- Temporary disruption of regular school functions and routines.
- Significant interference with the ability of students and staff to focus on learning.
- Physical and/or psychological injury to students and staff.
- Concentrated attention from the community and news media.

As a result of such emergencies, students and staff may exhibit a variety of psychological reactions. As soon as the physical safety of those involved has been insured, attention must turn to meeting the emotional and psychological needs of students and staff.

Specific procedures relating to crisis management are presented in the OEHS *Model Safe School Plan, Volume 1 – Prevention Programs*, and Bulletin N-18, *Organizing for Crisis Intervention and Assessing and Managing Threats (1/14/02)*.

Procedure

1. The School Administrator will establish Psychological First Aid Team, which has primary responsibility for providing necessary assistance after all types of crises.
2. The Psychological First Aid Team will assess the range of crisis intervention services needed during and following an emergency.
3. The Psychological First Aid Team will provide direct intervention services.
4. If there is a need for additional assistance, the School Administrator will notify the Local District Superintendent.
5. The Psychological First Aid Team will advise and assist the School Administrator to restore regular school functions as efficiently and as quickly as possible.
6. In performing their duties, the Psychological First Aid Team members will limit exposure to scenes of trauma, injury and death.
7. The Psychological First Aid Team will provide ongoing assessment of needs and follow-ups services as required.

5.16 SUSPECTED CONTAMINATION OF FOOD OR WATER

This procedure should be followed if site personnel report suspected contamination of food or water. This procedure applies where there is evidence of tampering with food packaging, observation of suspicious individuals in proximity to food or water supplies, or if notified of possible food/water contamination by central District staff or local agencies. Indicators of contamination may include unusual odor, color, taste, or multiple employees with unexplained nausea, vomiting, or other illnesses.

Procedure

1. The School Administrator will isolate the suspected contaminated food/water to prevent consumption, and will restrict access to the area.
2. The School Administrator will notify “911”, School Police (213) 625-6631, County Department of Health Services (213) 974-1234, Local District Office, and the Office of Environmental Health and Safety (213) 241-3199.
3. The School Administrator will make a list of all potentially affected students and staff, and will provide the list to responding authorities.
4. The First Aid/Medical Team will assess the need for medical attention and provide first aid as appropriate.
5. The School Administrator will maintain a log of affected students and staff and their symptoms, the food/water suspected to be contaminated, the quantity and character of products consumed, and other pertinent information.
6. School police will notify members of the Serious Incident Response Team (SIRT), which will conduct an onsite review to determine necessary follow-up actions including the need to notify other potentially affected District facilities.
7. The School Administrator and the SIRT will confer with the County Department of Health Services before the resumption of normal operations.
8. The School Administrator will notify parents of the incident, as appropriate.

5.17 THREAT OF VIOLENCE

This procedure should be followed if site personnel receive a threat that may target an individual, a particular group or the entire school community. Such threats may be received by written note, e-mail communication or phone call. The School Administrator should ensure all threats are properly assessed in accordance with Bulletin N-18, *Organizing for Crisis Intervention and Assessing and Managing Threats (1-14-2002)*.

Procedure

1. The School Administrator will identify the type of threat and attempt to determine the individual(s) making the threat.
2. The School Threat Assessment Team will conduct the threat assessment in accordance with Bulletin N-18. A school police officer should be part of this team.
3. Consistent with Bulletin N-18, the School Threat Assessment Team will assess the warning signs, risk factors, stabilizing factors and potential precipitating events to arrive at a categorical description of the risk for a particular point in time. There are five categories of risk as described by the Los Angeles Police Department:

Category 1 – High violence potential; qualifies for arrest or hospitalization.

Category 2 – High violence potential; does not qualify for arrest or hospitalization.

Category 3 – Insufficient evidence for violence potential; sufficient evidence for the repetitive/intentional infliction of emotional distress upon others.

Category 4 – Insufficient evidence for violence potential; sufficient evidence for the unintentional infliction of emotional distress upon others.

Category 5 – Insufficient evidence for violence potential; insufficient evidence for emotional distress upon others.

4. In categorizing the risk, the School Threat Assessment Team will attempt to answer two questions: (1) Is the individual moving on a path towards violent action? (2) Is there evidence to suggest movement from thought to action?
5. The School Threat Assessment Team will assess the warning signs by evaluating the associated oral, written or electronic threatening communications.
6. The School Threat Assessment Team will recommend appropriate action to the School Administrator.

7. As soon as the physical safety of those involved has been insured, attention will turn to meeting the emotional and psychological needs of students and staff. Crisis intervention may be necessary and appropriate.

5.18 UNLAWFUL DEMONSTRATION/WALKOUT

An **Unlawful Demonstration/Walkout** is any unauthorized assemblage on or off campus by staff or students for the purpose of protest or demonstration.

Procedure

1. Upon indication that an unlawful demonstration or walkout is about to begin, personnel should immediately notify the School Administrator.
2. The School Administrator will initiate appropriate Immediate Response Actions, which may include SHELTER-IN-PLACE as described in Section 4.0.
3. The School Administrator will notify School Police (213) 625-6631, the Local District Office and the Office of School Operations to request assistance and will provide the exact location and nature of emergency.
4. The Request Gate Team will immediately proceed to the Main Gate to control student ingress and egress. Each person entering or leaving the campus shall be required to sign his/her name, and record address, telephone number and time entered or departed. The Main Gate should not be locked, as a locked gate may create a serious hazard for students leaving or attempting to re-enter the campus.
5. If students leave the campus, the Request Gate Team, in consultation with the School Administrator, will designate appropriate staff members to accompany them. These staff members will attempt to guide and control the actions of students while offsite.
6. Students not participating in the demonstration or walkout should be kept within their classrooms until further notice by the School Administrator. Teachers will close and lock classroom doors. Students and staff should be protected from flying glass in the event windows are broken, by closing drapes and venetian blinds in rooms so equipped.
7. The Documentation staff member should keep accurate record of events, conversations and actions.
8. All media inquiries will be referred to the designated school's Public Information Officer.
9. The School Administrator should proceed in good judgment on basis of police or other legal advice, in taking action to control and resolve the situation.
10. The School Administrator will notify parents of the incident, as appropriate.

6.0 OTHER EMERGENCY INFORMATION

The School Administrator must have access to appropriate information, and a method of communication with parents, school personnel and outside agencies. To facilitate this communication, the following information is provided for use in an emergency.

District Bulletins Dealing with Emergencies

Alert System 1 (Parent)

Alert System 2 (School Personnel)

Site Plot Plan and Vicinity Map

Emergency Phone Numbers

Emergency Drills

No.	Subject	Date	Emergency Procedure	Sect.

6.2 ALERT SYSTEM 1 (PARENT)

Parent contact information is maintained in the main office and managed by
[Angie Diaz]

6.3 ALERT SYSTEM 2 (SCHOOL PERSONNEL)

A current listing of school personnel contact numbers is provided in Appendix B.

[Note: Attach listing of school personnel telephone numbers in Appendix B]

6.4 SITE PLOT PLAN AND VICINITY MAP

A Site Plot Plan and Vicinity map are provided in Appendix C. The Site Plot Plan includes the locations of emergency supplies, fire extinguishers, utilities shutoff valves, on-site primary and backup assembly areas and associated evacuation routes. The Vicinity Map indicates the off-site primary and backup assembly areas and the designated evacuation routes to these locations.

6.5 EMERGENCY PHONE NUMBERS

A listing of external emergency phone numbers is provided in Table 6-2 below.

TABLE 6-2: EMERGENCY PHONE NUMBERS

School Name	Birmingham Community Charter High School		
School Address	17000 Haynes St., Lake Balboa, CA. 91406		
School Phone	818-758-5200	Location Code	
District			
Principal	Ari Bennett		818-758-5203
Assistant Principal	Jose Navarro		818-758-5226
Local District Facilities Director	Maria Thorpe		213-241-0354
Local District Superintendent	N/A		N/A
Office of School Operations	N/A		N/A
Public Information Officer	Ari Bennett		818-758-5203
School Nurse	Anna Muradyam		818-758-5213
Bus Dispatch	N/A		N/A
Office of Communications			N/A
Office of Emergency Services			(877) 275-5273
Office of Environmental Health and Safety			(213) 746-7175
School Mental Health			(818)254-9154
School Police			(213) 625-6631
Student Medical Services			
Non-District			
Fire And Medical Emergencies			911
Air Quality Management District			(909) 396-2000
California Highway Patrol			(818) 888-0980
County Department of Health Services			(818) 901-4375
Gas Company	So Cal Gas Co		(800) 427-2200
Electric Company	Department of Water and Power		(800) 342-5397
Local Fire Station	Station 100/Lake Balboa		(818)756-8600
Local Hospital	Valley Presbyterian		(818)782-6600
Local Police/Sheriff Dept	West Valley Division		(818) 644-8080
Medical Clinic (Nearest)	North Hollywood Health Care		(818) 763-2801
Sewer Authority	Los Angeles Sewer Maintenance		(310) 478-7253
Water Company	Department of Water and Power		(800) 342-5397

6.6 EMERGENCY SUPPLIES AND EQUIPMENT

Emergency supplies will be maintained in each classroom and a centralized location:

Emergency Supply Bin located behind home-side bleachers of football field.

Emergency buckets also located in all classrooms.

[Note: The lists of emergency equipment listed in the two tables below are minimum recommendations]

TABLE 6-3: RECOMMENDED CLASSROOM EMERGENCY SUPPLIES

[Location: Place these supplies next to primary evacuation doorway in each classroom]

****Please see inventory in hard copy of Safe School Plan in Main Office*

Item	Recommended Quantity	Quantity at Hand
Backpack	1	
Flashlight	1	
Batteries	2	
Pair of scissors	1	
First Aid instruction summary sheet	1	
Pad of paper (for name tags, etc.)	1	
Pen	1	
Pencil	1	
Light stick	1	
Whistle	1	
Sewing kit	1	
Package of safety pins	1 package	
Solar blanket	1	
Package of 10 gums	1 package	
Package of 10 life savers	1 package	
Package of plastic trash bags	6 packages	
Package of small paper bags	2 packages	
Package of paper cups	2 packages	
Package of premoistened towelettes	1 package	
Bottle of hydrogen peroxide	1	
Small package of Tylenol	2 packages	
Package of Tums	1 package	
Ammonia inhalants	4	
Ziploc sandwich bags	2	
Box of Telfa pads	1	
Pair of tweezers	1	
Box of Band-Aids	1	
Cold packs	2	
2" roller bandage	1	
3" roller bandage	1	
Box of triangular bandages	1	
Roll of adhesive tape	1	
Pair of disposable gloves	10	
Container of waterproof matches	1	
Box of toilet tissue	1	
Box of sanitary napkins	1	
Bottle of saline solution	1	

TABLE 6-4: RECOMMENDED SCHOOL EMERGENCY SUPPLIES*[Suggested quantities are for 100 people for a period of 72 hours]*

Type	Item	Recommended Quantity	Quantity at Hand
Food			
	Raisins – boxed and dated	20 lbs.	
	Large potatoes – canned and dated	60 cans	
	Large soups – dated	60 cans	
	Stewed tomatoes – dated	20 cans	
	Large canned beans – dated	20 cans	
	Large mixed fruit or fruit – dated	60 cans	
	Large peanut butter	20 tubs	
	Crackers	2 cases	
	Canned fruit juice	2 cases	
	Sugar cubes	4 boxes	
First Aid			
	First Aid Manual (Red Cross, up-to-date)	1	
	Alcohol	4 bottles	
	Alcohol prep (100 count)	4 boxes	
	Aluminum foil – 18 inches wide	4 rolls	
	Antibiotic solution (betadyne)	4 bottles	
	Aromatic spirits of ammonia (10 count)	4 boxes	
	Band-Aids – assorted sizes	8 boxes	
	Bandage – ACE wrap, Kerlix, Kling or other conforming bandage of several widths – 2, 3, 4, 6 inch	4 boxes each	
	Bandage scissors – blunt nose type	9 pairs	
	Bandage, triangular – 36 x 40 x 55 inch	30	
	Basin, emesis – disposable	10	
	Blankets – space or disposable	150	
	Blood pressure cuff with manometer	6	
	Burn sheets – sterile, disposable	4 packages	
	Cervical collar – small, medium & large	4 each	
	Cotton balls – unsterile	4 large packages	
	Disinfectant – hand washing	4 gallons	
	Dressings – 2x2's, 3x3's & 4x4's sterile	4 boxes each	
	Dressings – 5x9's & 8x10's sterile	4 boxes each	
	Dressings – eye pad, oval sterile	15 boxes	
	Dressings – Vaseline gauze 3x36 inch sterile	4 boxes	
	Ipecac	4 bottles	

Type	Item	Recommended Quantity	Quantity at Hand
	Kleenex	10 boxes	
	Marking pens – for all surfaces	6	
	Needles – for removing splinters & glass	4 packages	
	Note pads	20	
	Pack – cold Temp-Aid	1 case	
	Paper cups	4 boxes	
	Pack – hot Temp-aid	1 case	
	Paper bags	4 boxes	
	Paper towels	4 cases	
	Pencils or ball point pens	4 packages	
	Petroleum jelly	4 large jars	
	Pitcher or jar with cover – can be used as a measuring device	4 one quart size	
	Q-tip swabs	6 packages	
	Safety pins – assorted sizes	6 packages	
	Saline 1 tsp. per quart sterile water = normal saline	4 boxes	
	Sanitary napkins – can be used for heavy bleeding wounds	2 cases	
	Spine board – long and short	2 each	
	Splints – inflatable, boards, magazines or other	Several sets	
	Standard surgical gloves – medium and large	4 boxes	
	Table	4	
	Thermometer – oral – Tempa-dot, disposable	4 boxes each	
	Toilet tissue	4 cases	
	Tongue depressors	4 packages	
	Towelettes – moist	15 boxes	
	Treatment log	1	
	Triage tags (from Office of Emergency Services)	150	
	Tweezers – large	9 pairs	
	Tylenol (15 grains)	6 bottles	
	Water purification tablets or	4 bottles	
	Household bleach (6 drops in 1 gallon of water)	2 gallons	
Rescue Team Member			
	Back Pack	1	
	Gloves	1	
	Helmet	1	
	Orange Vest	1	
	Goggles	1	

Type	Item	Recommended Quantity	Quantity at Hand
	Boots	1	
	Heavy Clothing	1	
	Flashlight	1	
	Extra Batteries	1	
	Personal First Aid Kit	1	
	Water and Paper Cups	1	
	Whistle	1	
	Marker Pens	1	
	Fire Extinguisher 3-A:40-B:C	1	
	Pry Bars 36 and 66 Inches Long	1	
	Axes	1	
	Sledge Hammer 5-8 lb.	1	
	Pocket Knife	1	
	Duct Tape	1	
	Utility Shutoff Tools	1	
	Note Pad and Pen	1	
	Cyalume Sticks	1	
	Walkie-Talkie	1	
Other			
	Blankets	100	
	Large battery operated radio with batteries	1	
	Heavy duty flashlights with batteries and bulbs	4	
	Whistles (for communicating with staff and students)	4	
	Clipboards	4	
	Ink pens	6	
	Medium garbage bags (40 count)	4 packages	
	Large 3-ply garbage bags (20 count)	4 packages	
	Plastic buckets – 5 gallon	6	
	Pads of paper	4	
	Scotch tape	4 rolls	
	Bed sheet strips (use as optional bandages)	4	
	Plastic cups (100 count)	6 packages	
	Paper plates (100 count)	6 packages	
	Plastic spoons, knives and forks (100 count)	6 packages	
	Can openers – manual	5	

6.7 EMERGENCY DRILLS

In order to be adequately prepared, the following drills should be executed and documented in the Emergency Drill Record (Form G, Appendix A). There are three emergency drills school personnel should be prepared to implement: Drill 1 - Fire; Drill 2 - Shelter-in-Place Alert; and Drill 3 – Earthquake.

6.7.1 DRILL 1: FIRE

Signal: Continuing short bells for 10 seconds pause for 5 seconds; sequence repeats for a minimum of 1 minute.

Procedure:

Teachers

1. Please refer to the evacuation map in your classroom. If the room does not have a map, please contact the Principal today.
2. Familiarize yourself with class's route before the drill begins.
3. When the signal is given, have students form a single line outside the classroom. (Form a double line for large classes.)
4. Check to see that all students are out of the classroom; take student roster and close all doors.
5. Have students walk **quietly** in single file to the Assembly Area. Teachers should walk at the rear of the line.
6. Have students form a single line in the designated Assembly Area
7. Take attendance.
8. Wait for the "all clear" signal – one long, steady bell – then return **quietly** to your classroom in single file.

All Other Personnel: Report to Assembly Area for further instructions.

6.7.2 DRILL 2: SHELTER-IN-PLACE

A Shelter-In-Place indicates that an emergency that requires students and staff to remain inside has occurred.

Signal: The signal for the “Shelter-In-Place” drill is the following PA announcement.

“YOUR ATTENTION PLEASE. BECAUSE WE HAVE RECEIVED INFORMATION REGARDING A HAZARD IN THE COMMUNITY, WE ARE INSTITUTING SHELTER-IN-PLACE PROCEDURES. REMEMBER, THIS MEANS STUDENTS AND STAFF ARE TO REMAIN INSIDE THE BUILDING AWAY FROM OUTSIDE AIR WITH WINDOWS AND DOORS SECURELY CLOSED AND AIR CONDITIONING UNITS TURNED OFF. ALL STUDENTS AND STAFF THAT ARE OUTSIDE ARE TO IMMEDIATELY MOVE TO THE PROTECTION OF AN INSIDE ROOM. AS SOON AS WE HAVE FURTHER INFORMATION, WE WILL SHARE IT WITH YOU.”

Procedure:

1. When the announcement has been given, all classes will remain in their rooms.
2. Physical education classes will proceed into the gym.
3. Students should be arranged in the shelter area so as to enable them to assume a **‘Duck and Cover’** position on command given by the teacher in charge.
4. Move students to the most protected areas in the room.
5. Have students face away from windows and keep their backs toward windows.
6. Close all doors and windows. If possible, cover windows by lowering blinds, closing slots, drawing curtains, or pulling shades
7. Turn off gas, lights, power equipment, and appliances. All personnel must remain in the shelter area until further instructions are received from official sources.

6.7.3 DRILL 3: EARTHQUAKE

An earthquake drill is held to provide maximum protection in case of earthquake or other emergency where the risk of flying or falling debris is present. No advance warning or signal normally will be given. In practice drills, teachers should supervise students and be alert to the position of each student during the entire drill.

Signal: The signal for the drill is the following PA announcement.

“YOUR ATTENTION PLEASE. AS YOU ARE AWARE, WE ARE EXPERIENCING SOME SEISMIC ACTIVITY. FOR EVERYONE’S PROTECTION, ALL STUDENTS SHOULD FOLLOW STAFF DUCK AND COVER PROCEDURES, WHICH MEAN YOU SHOULD BE IN A PROTECTED POSITION UNDER A TABLE OR DESK, AWAY FROM WINDOWS AND ANYTHING THAT COULD FALL AND HURT YOU. HOLD THIS POSITION UNTIL THE SHAKE STOPS OR GIVEN FURTHER INSTRUCTIONS.”

Procedure:

1. Drop to knees facing away from windows.
2. Get under desks or tables where possible.
3. Fold body onto floor with arms close to knees.
4. Place head as far as is possible between knees; cover crown of the head with hands.
5. Stay in this position for 10 seconds.
6. Teachers will direct students to return to seats.

After an earthquake, students will evacuate using the evacuation routes practiced during the fire drill. The students are gathered in the Assembly Area and line up in the designated space.

If an earthquake occurs during non-classroom hours i.e., passing periods, nutrition, or lunch, all persons will proceed to the Assembly Area and line up in the designated space.

APPENDIX A

FORMS

FORM A
EMERGENCY HAZARD ASSESSMENT SUMMARY

FORM A – EMERGENCY HAZARD ASSESSMENT SUMMARY

School Birmingham Community Charter High School

Location 17000 Haynes St. Lake Balboa, Ca. 91406

On-Site Hazard:

[List any unusual on-site hazards which are unique to the school, e.g., underground storage tanks, unusual chemicals]

Off-Site Hazards:

[List any unusual off-site hazards unique to the school, e.g. freeways, railroads, pipelines, power transmission lines, industrial facilities]

None

Completed by Tommy Elmore

Date 10/31/22

[Note: This form should be completed annually, and a copy forwarded to OEHS]

FORM B
BIOLOGICAL AND CHEMICAL RELEASE RESPONSE CHECKLIST

FORM B – BIOLOGICAL AND CHEMICAL RELEASE RESPONSE CHECKLIST

School _____

Location _____

	Yes	No	Note
Have students and staff been evacuated from area of contamination?	_____	_____	_____
Have all students and staff been accounted for?	_____	_____	_____
Has the area of contamination been cordoned off and secured?	_____	_____	_____
Has the area of contamination been affixed with conspicuous signs reading: "DO NOT ENTER"?	_____	_____	_____
Have the doors and windows to the area of contamination been closed and locked?	_____	_____	_____
Have fans and ventilators serving the area of contamination been turned off?	_____	_____	_____
Have staff, students, or other personnel who came in contact with the area of contamination cleaned their hands with soap and water?	_____	_____	_____
	_____	_____	_____
	_____	_____	_____

Completed by _____

Date _____

[Note: Send a copy of this form to OEHS and maintain the original in the emergency document file.]

FORM C
BOMB THREAT REPORT

FORM C – BOMB THREAT REPORT

School _____

Date of Call _____ Time of Call _____ a.m. _____ p.m. _____

Call Received by _____

Location _____ (Phone Number) _____

The person answering the threat call should ask the following questions and record the answers below

When is the bomb going to explode? _____ a.m. _____ p.m. _____

Where is it? _____

What will cause it to explode? _____

What kind of bomb? _____

Why are you doing this? _____

Who are you? _____

What can we do for you to avoid
the bomb from exploding? _____

How can you be contacted? _____

Record the exact language of the threat:

Voice on the Phone: Man () Woman () Child () Age _____

Intoxicated () Accent () Speech Impediment ()

Other () _____

Background Noise: Music () Talk () Children () Machines ()

Airplane () Typing () Traffic ()

Other () _____

Completed by _____

Date _____

[Note: Send a copy of this form to School Police and maintain the original in the emergency document file.]

Bomb Threat Report Form C – June 2003

FORM D
INJURY AND MISSING PERSONS REPORT

FORM D – INJURY AND MISSING PERSONS REPORT

School _____

Room Number _____

Teacher's Name _____

Date _____

INJURED		
Name	Type of Injury	Location

MISSING PERSONS	
Name	Last Seen Location

[Note: Send a copy of this form to School Police and maintain the original in the emergency document file.]

FORM E
STUDENT RELEASE LOG

FORM E – STUDENT RELEASE LOG

School _____

Date _____

Student's Name	Release Time	Name of Person Released to	Signature

[Note: Maintain the original in the emergency document file.]

FORM F
DAMAGE ASSESSMENT REPORT

FORM F – DAMAGE ASSESSMENT REPORT

NOTE: Do not enter building unless the structural evaluation has been completed and the building is designated as safe to enter.

School/Site Name: _____ Location/Building Code: _____

District: _____ Date: ____/____/____ Time: (24:00 Hours): ____:____

Damage Category	No Damage	Slight Damage	Severe Damage	Hazardous Condition	Location/Room #/Note
Electrical	?	?	?	?	_____
Natural Gas Lines and Water Heater/Boiler	?	?	?	?	_____
Water	?	?	?	?	_____
Sewer	?	?	?	?	_____
Phone	?	?	?	?	_____
<u>Hazardous Materials</u> Custodial chemicals	?	?	?	?	<u>Chemical Type/Quantity spilled or leaking:</u> _____
Lab chemicals	?	?	?	?	<u>Chemical Type/Quantity spilled or leaking:</u> _____
Asbestos	?	?	?	?	_____
Lead	?	?	?	?	_____
<u>Physical Hazards</u> Sink Holes	?	?	?	?	_____
Construction Areas	?	?	?	?	_____
Damaged Bld. Matl.	?	?	?	?	_____
Broken Glass	?	?	?	?	_____

Notes: (description of trouble, location, severity or hazardous materials):

Findings

Building or room safe for reoccupancy ?

Building or room closed due to hazardous condition ?

The following corrective measures need to be completed prior to reoccupancy:

[Note: Send a copy of this form to OEHS and maintain the original in the emergency document file.]

FORM G
EMERGENCY DRILL RECORD

FORM G – EMERGENCY DRILL RECORD

School _____

Type of Drill	Date Held	Time		Remarks	Recorded by
		Start	End		

[Note: Send a copy of this form to LAUSD School Operations and Local District Operations Manager. Maintain the original in the emergency document file.]

FORM H
EMERGENCY MANAGEMENT ORGANIZATIONAL CHART

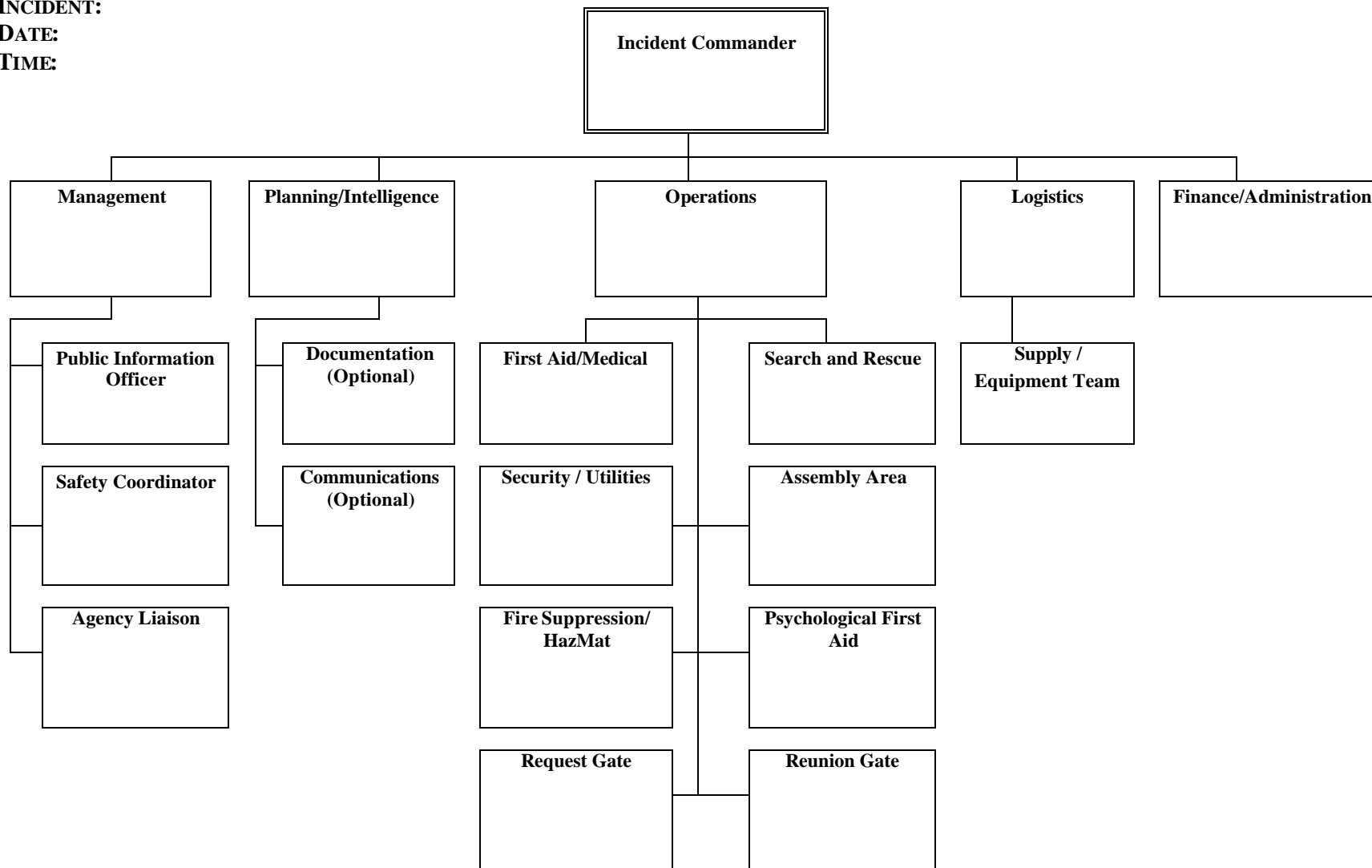
SCHOOL: ***See page 2-3

FORM H - EMERGENCY MANAGEMENT ORGANIZATION CHART

INCIDENT:

DATE:

TIME:



[Note: This Organization Chart is based on SEMS, and adapted for BCCHS use. The Principal and School Safety Planning Committee should use discretion in making further modifications to address specific needs of the school. This form may be used on the date of an incident to establish emergency assignments]

APPENDIX B

ALERT SYSTEMS

ALERT SYSTEM 2

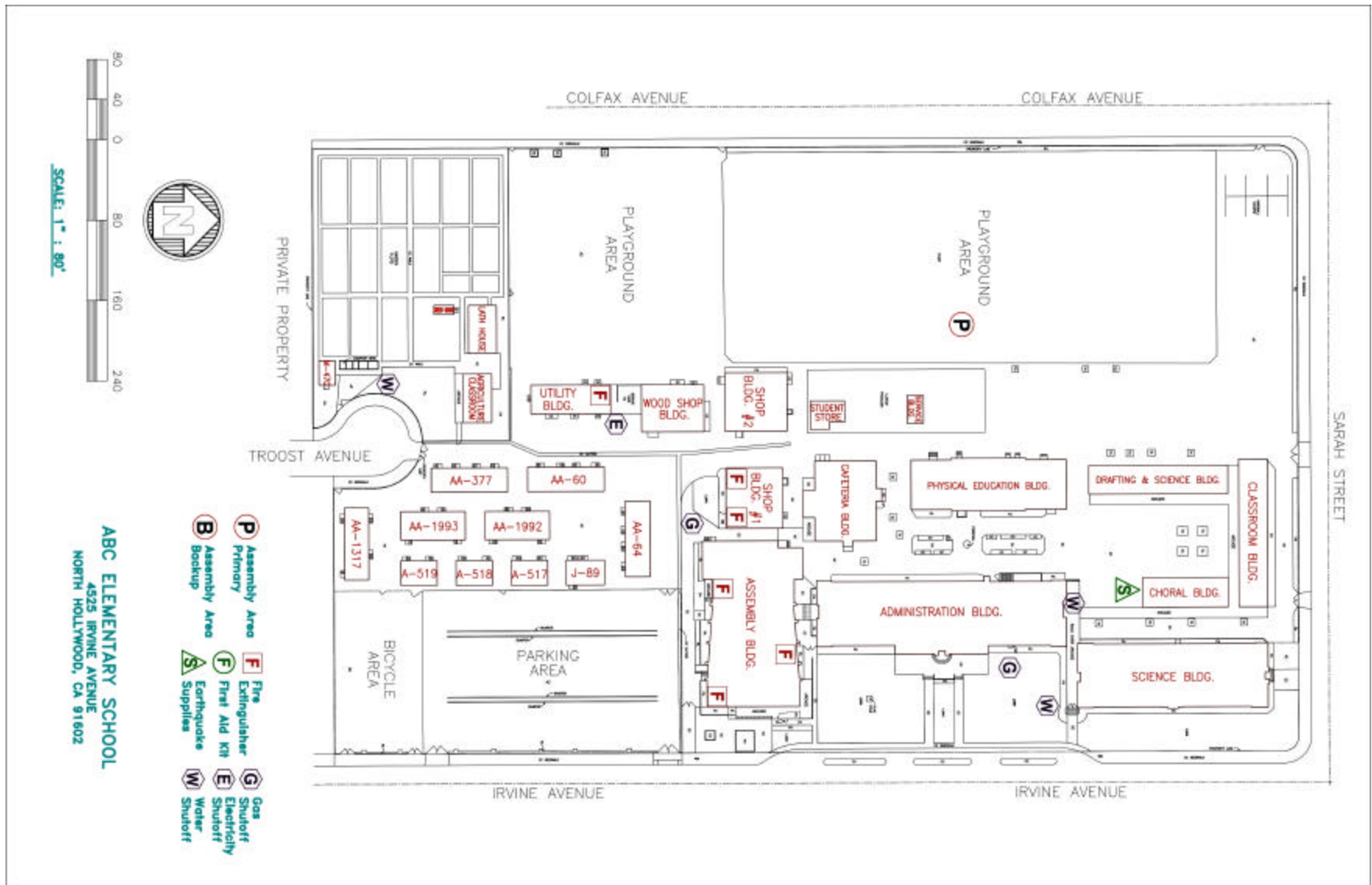
SCHOOL PERSONNEL

APPENDIX C

MAPS

SITE PLOT PLAN

Site Plot Plan – ABC Elementary School



VICINITY MAP

Vicinity Map – Birmingham Community Charter High School

